



LEO THIBAUT
Edwards Yacht Sales
127 E Charlotte Ave
Punta Gorda, FL, US
Office: 727.449.8222
Mobile: 941.504.6754
Leo@EdwardsYachtSales.com



1986 Silverton Aft Cabin OWNER MOTIVATED!!

Boat Type: Flybridge

Address: Port Charlotte, FL, US

Price: \$39,900



OVERVIEW

WOW!!!! This is a GREAT BOAT FOR THE PRICE!!!

Move on today and enjoy the live-a-board Lifestyle!! NO yearly Property Tax!!

New Canvas w/screens, New Furniture, New Hoses, 3 New batteries, New exhaust, and all new thru-hull fittings.

Insurance survey from August 2008 Value this boat at \$62,000. This survey is available to serious buyers!

Click on Full Specs for complete details!!

LIVE YOUR DREAMS

SPECIFICATIONS

Basic Information

Manufacturer:	Silverton	Vessel Name:	
Model:	Aft Cabin OWNER MOTIVATED!!	Boat Type:	Flybridge
Year:	1986	Hull Material:	Fiberglass
Category:	Power	Hull Type:	
Condition:	Used	Hull Color:	
Location:	Port Charlotte, FL, US	Designer:	
Available for sale in U.S. waters:	Yes	Flag of Registry:	

Dimensions & Weight

Length:	40 ft - 12.19 meter	Draft - max:	3 ft - 0.91 meter
LOA:	40 ft - 12.19 meter	Bridge Clearance:	-
Beam:	14 ft - 4.27 meter	Dry Weight:	-

Engine

Make:	Crusader	Engine Type:	
Model:	454	Drive Type:	
Engine(s):	2	Fuel Type:	Gas/Petrol
Hours:	1400	Horsepower:	-
Cruise Speed:	-	Max Speed:	-
Range:	-	Joystick Control:	No

Tank Capacities

Fuel Tank:	-	Holding Tank:	-
Fresh Water Tank:	-		

Accommodations

Total Cabins:	-	Crew Cabins:	1
Total Berths:	-	Crew Berths:	1
Total Sleeps:	1	Crew Sleeps:	1
Total Heads:	-	Crew Heads:	1
Captains Cabin:	No		

DESCRIPTIONS

Dimensions

Displacement: 24000

Engines

Total Power: 350

Cruising Speed: 17

Max Speed: 20

Tanks

Fuel: 300

Fresh Water: 100

Holding: 40

Accommodations

Enter the salon via a hatchway and staircase to the starboard side. You will immediately appreciate the high level of care and updating that the found within. The rich carpet is in like new condition. The drapes and blinds provide privacy, but tuck away to reveal great views through the large salon windows. New Sofa and recliner make the salon very comfortable

Light oak cabinetry and paneling adds to the bright appearance of each room. The salon also includes a convenient wet bar and ice-maker at the aft bulkhead, plus a flat screen TV stand and cabinet at the forward salon bulkhead.

Step down and forward to the galley & dinette level. The galley features a full-size fridge & freezer, plus abundant counter-top and cabinet area and a gorgeous teak & holly floor. A large C-shaped dinette, newly upholstered, sits to starboard.

The forward stateroom includes a large v-berth, with four drawers beneath, a ventilating hatch overhead, portlights and a hanging locker. The forward head compartment features shower stall, head & vanity.

Return aft through the salon and continue to the master stateroom. This beautiful room includes a queen size berth, twin nightstands, a double hanging locker, two sets of dresser drawers and an en-suite head complete with stall shower, head & vanity.

Galley

Galley is down. U-shaped with Norcold ac/dc refrigerator with freezer, three burner electric princess range and oven, stainless steel galley sink and handy cutting board cover over the range burners. The u-shaped settee and galley table are to starboard and can seat six comfortably. This table also converts along with the settee to a third double berth for those emergency drop ins.

Electronics

- Ritchie compass.
- Garmin 225 GPS Color plotter.
- Raytheon 11SX Radar.
- ICOM VHF.
- Hailer.
- Surround sound system
- Two 30 AMP outlets.
- Gemini compass.
- New NAV main fuel control system

Electrical

- 4 Batteries.
- Numar HDM 30 Automatic battery charger.
- 110V & 220V AC electric.
- Kohler 7.5 KW generator.
- 12V DC electric.
- 2 Zone A/C with Heat.

Deck and Hull Equipment

New Canvas and enclosure with screens!

- 60' chain with 200' rope.
- Bow pulpit & rails.
- Fiberglass deck.
- Transom Docking lights.
- Life jackets.
- Single search light.
- New Lumar 900 GD windlass.

- Full enclosure on bridge.
- Coast Guard Approved Safety Package
- Side stanchions with lifelines.
- Fenders & lines.
- Navigation lights.
- Swim ladder.
- Transom shower.
- Potable stainless steel grill.
- New Sunbrella full welded aft deck sun protection.
- Danforth anchor.

Mechanical & Engine Room

- 2 Zone Air conditioning with heat.
- Bilge blower.
- 3 Bilge pumps.
- Engine alarm.
- Fume detector.
- Vacuflush head system.
- Fresh water cooling system

Brokers Comments

WOW!!!! This is a GREAT BOAT FOR THE PRICE!!!

Move on today and enjoy the live-a-board Lifestyle!! NO yearly Property Tax!!

New Canvas w/screens, New Furniture, New Hoses, 3 New batteries, New exhaust, and all new thru-hull fittings.

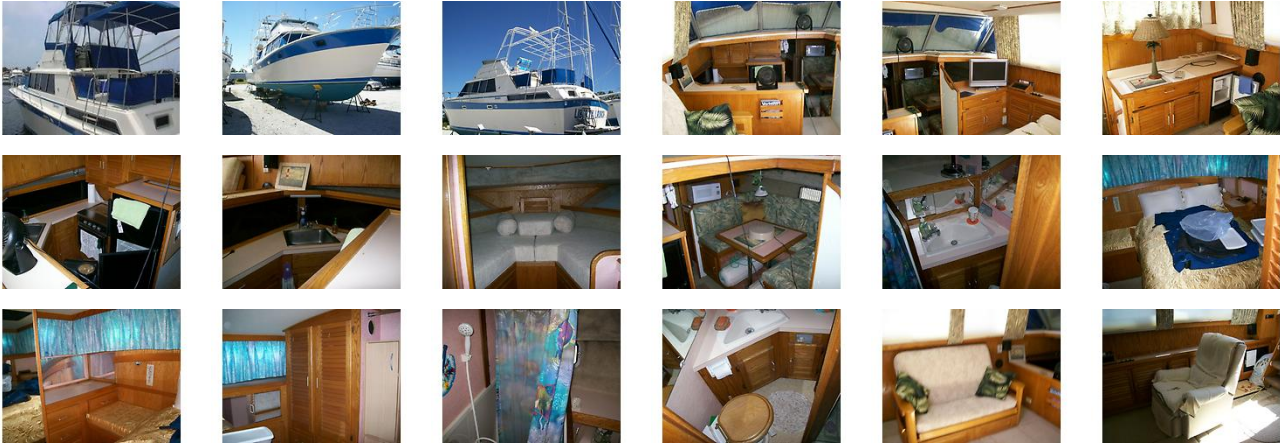
Click on Full Specs for complete details!!

LIVE YOUR DREAMS

Disclaimer

The Company offers the details of this vessel in good faith but cannot guarantee or warrant the accuracy of this information nor warrant the condition of the vessel. A buyer should instruct his agents, or his surveyors, to investigate such details as the buyer desires validated. This vessel is offered subject to prior sale, price change, or withdrawal without notice.

GALLERY



LOCATION MAP



LEO THIBAUT
Edwards Yacht Sales
127 E Charlotte Ave
Punta Gorda, FL, US
Office: 727.449.8222
Mobile: 941.504.6754
Leo@EdwardsYachtSales.com

