



LEO THIBAUT
Edwards Yacht Sales
127 E Charlotte Ave
Punta Gorda, FL, US
Office: 727.449.8222
Mobile: 941.504.6754
Leo@EdwardsYachtSales.com



1977 Viking Motor Yacht GREAT SHAPE!!!!

Boat Type: Flybridge

Address: Fort Myers, FL, US

Price: \$69,900



OVERVIEW

Price Drop!!! Owner Wants This Boat Sold!!! Call Today!!!

Are you ready to push off to your dream destinations? This great boat is ready to go! Waltzing Matilda is in TURN KEY CONDITION!! Why Wait! Call Today!!!

Great Condition Inside and out!!

This 43' Viking is an outstanding example of a very popular and roomy, Aft cabin motor yacht. She has been superbly maintained with many upgrades over the last years. She simply must be seen to be fully appreciated. Priced very competitively. Don't miss out call today!

SPECIFICATIONS

Basic Information

Manufacturer:	Viking	Vessel Name:	
Model:	Motor Yacht GREAT SHAPE!!!!	Boat Type:	Flybridge
Year:	1977	Hull Material:	Fiberglass
Category:	Power	Hull Type:	
Condition:	Used	Hull Color:	
Location:	Fort Myers, FL, US	Designer:	
Available for sale in U.S. waters:	Yes	Flag of Registry:	

Dimensions & Weight

Length:	43 ft - 13.11 meter	Draft - max:	-
LOA:	43 ft - 13.11 meter	Bridge Clearance:	-
Beam:	-	Dry Weight:	-

Engine

Make:		Engine Type:	
Model:	6-71 Natural	Drive Type:	
Engine(s):	2	Fuel Type:	Diesel
Hours:	1500	Horsepower:	-
Cruise Speed:	-	Max Speed:	-
Range:	-	Joystick Control:	No

Tank Capacities

Fuel Tank:	350 gallons - 1 tank(s)	Holding Tank:	-
Fresh Water Tank:	100 gallons - 1 tank(s)		

Accommodations

Total Cabins:	-	Crew Cabins:	1
Total Berths:	-	Crew Berths:	1
Total Sleeps:	1	Crew Sleeps:	1
Total Heads:	-	Crew Heads:	1
Captains Cabin:	No		

DESCRIPTIONS

Dimensions

Beam: 14'9"
Max Draft: 3'9"
Max Bridge Clearance: 15'
Displacement: 34,000

Engines

Total Power: 310
Cruising Speed: 8 to 16
Max Speed: 19

Tanks

Holding: 75 in 2 tanks

Layout

This spacious Viking 43 motoryacht is in beautiful condition and offers more room than you would think. She has a very large aft master stateroom with a centerline queen bed, plus a good size guest vee-berth in the bow. She has two heads both with stall showers, and a large airy salon. Very Roomy, Extremely Comfortable, Leather Lazyboy Love Seat Recliner, Swivel Barrel Chair, 2 Director Chairs, Teak Tables, 36 inch Sony High Definition Flatscreen with upconverting DVD Player JVC CD Player Speakers Forward Cabin, Salon, Aft Cabin, Fly Bridge. Liquor Storage Bar, U-Line Ice maker. The interior is decorated in soft shades with teak trims. All the interior wood is in great shape.

Galley

The spotless galley is down to starboard and has every thing needed for the chef to prepare an elegant meal or just a quick snack. Lots of counter space make things easy. The Galley was up-dated in 2007, New Sink, Stove, Tile Countertops, New Parquet Flooring, Corian Dinette Table-Retracts to open up space in Galley. New Microwave, Large Refrigerator. Huge Pantry,

Electronics

Ready to push off today.. Bahamas anyone??

- Compass – Ritchie 3.5” and Airguide 3.5”
- VHF – Icom – IC-M302 – Icom IC M120
- Depthsounder – Standard – Horizon
- Fishfinder/Depth Sounder – Raymarine Color DS500X
- Chartplotter – Garmin – GPS MAP 2210
- Radar – Raytheon – R21X – 36 Mile Range
- Autopilot – Raytheon – ST6002
- Searchlight – 12VDC Stainless Steel with Remote Control

Electrical

Neat, tidy and ready to go!!

- 7'5 KW Onan Generator 1800 Hours
- 2 - New 30 Amp Shore Power Cords with 50 Amp Y adaptor
- 110 outlets upgraded to GFI - 2010 in Galley
- Cable TV and Phone Connections
- Built in Electric Heaters in Forward Cabin, Salon and Aft Cabin
- 2 - 16000 BTU Cruise Air A/C Units, both Serviced, Salon AC Factory Reconditioned October 2010

Hull and Deck Equipment

Nice Shine!! Solid Decks!! Don't miss this deal!!!!

- Davits - Manual
- 2 Propane Tanks Mounted in Box on Swim Platform
- 66# Bruce Anchor with 200 ft 3/8 High Strength Chain and 5/8 Rode
- Windless

Mechanical and Engine Room

It's clear to see great pride was taken in this room!!

- Engines - Detroit Diesels
- Model - J&T 671-N - 310 HP each
- Glendinning Synchronizer
- Engine Hours - 1500
- Cruising Speed max Fuel Efficiency - 8kts
- Maximum Speed 19 kts
- Serviced, Starter Rebuilt 11/2010
- Recently Updated - 2010

- New Triple Bank Triple Pro Charger 2010
- Electrical System checked and updated as needed
- New Bilge pump, and Float Switch
- 2 New Shower Sumps, pumps and float switches
- Simpson 12 VDC Windlass Serviced, Chain Guide and Lock replaced
- Cabin Entry Door Lock and Deadbolt replaced 2010

Forward Guest Stateroom

V-Berth with insert to sleep two comfortably, hanging closet, six drawers for storage, separate door to enter forward head for privacy. The forward head has a vacu-flush toilet, stand up shower, storage under sink.

Owner's Aft Stateroom

Queen size bed (walk around on three sides), two hanging closets, six drawers and four cupboards for additional storage, indirect lighting. Stateroom head has vacu-flush toilet, stand up shower & storage under sink.

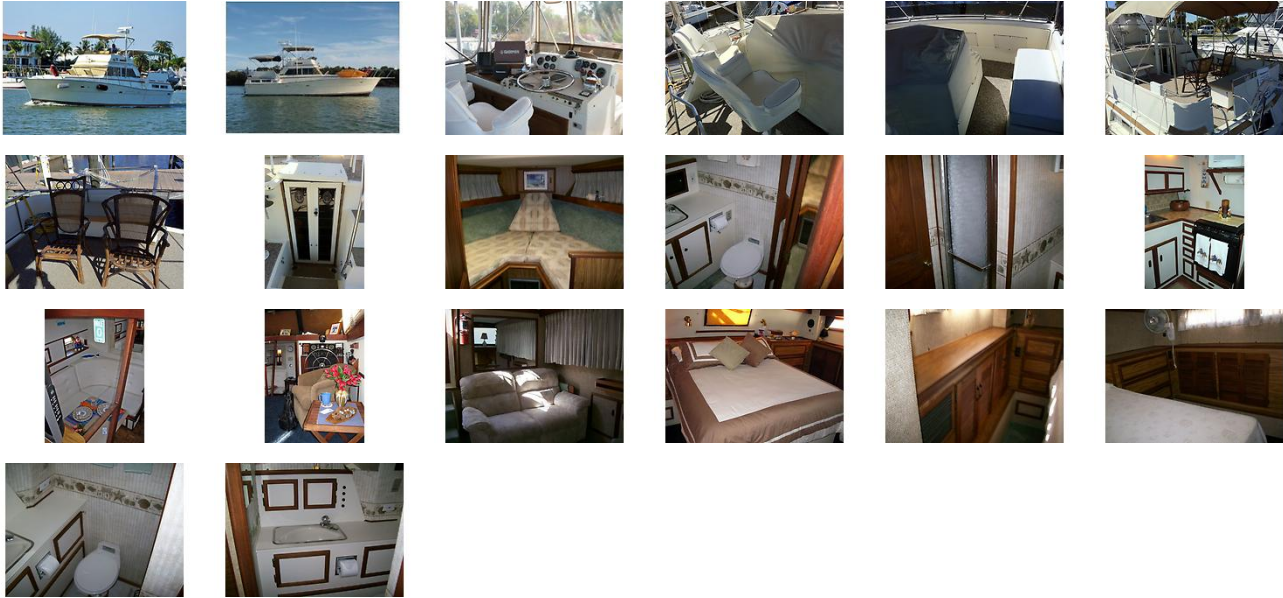
Brokers Comments

This Viking is definitely one of the cleanest and well maintained 43' aft cabin motor yachts on the market. You can purchase this yacht and either go for an enjoyable long cruise or live aboard comfortably with no immediate maintenance required. This is a definite must see yacht

Disclaimer

The Company offers the details of this vessel in good faith but cannot guarantee or warrant the accuracy of this information nor warrant the condition of the vessel. A buyer should instruct his agents, or his surveyors, to investigate such details as the buyer desires validated. This vessel is offered subject to prior sale, price change, or withdrawal without notice.

GALLERY



LOCATION MAP



LEO THIBAUT
Edwards Yacht Sales
127 E Charlotte Ave
Punta Gorda, FL, US
Office: 727.449.8222
Mobile: 941.504.6754
Leo@EdwardsYachtSales.com

