



**LEO THIBAUT**  
Edwards Yacht Sales  
127 E Charlotte Ave  
Punta Gorda, FL, US  
Office: 727.449.8222  
Mobile: 941.504.6754  
Leo@EdwardsYachtSales.com



# 1956 Custom Motor Sailor

Boat Type: Motorsailer

Address: Labelle, FL, US

Price: \$29,900



## OVERVIEW

WOW!! The owner says SELL!! \$20,000.00 price drop 10/9/14. New Price now \$29,900.00... Call Today...

This is your chance to own a Classic!

This Great Motor Sailor is Ready to GO!!!

***All the work has been done!! Click on Full Specs For all the details..***

Step back in time and be the envy of everyone!!

Call today!! This great classic won't last!!

## SPECIFICATIONS

### Basic Information

Manufacturer:	Custom	Vessel Name:	Albacore
Model:	Motor Sailor	Boat Type:	Motorsailer
Year:	1956	Hull Material:	Wood
Category:	Power	Hull Type:	
Condition:	Used	Hull Color:	
Location:	Labelle, FL, US	Designer:	
Available for sale in U.S. waters:	Yes	Flag of Registry:	

### Dimensions & Weight

Length:	46 ft - 14.02 meter	Draft - max:	6 ft - 1.83 meter
LOA:	46 ft - 14.02 meter	Bridge Clearance:	-
Beam:	14 ft 8 in - 4.47 meter	Dry Weight:	-

### Engine

Make:	Detroit Diesel	Engine Type:	Inboard
Model:	671	Drive Type:	
Engine(s):	1	Fuel Type:	Diesel
Hours:	-	Horsepower:	-
Cruise Speed:	-	Max Speed:	-
Range:	-	Joystick Control:	No

### Tank Capacities

Fuel Tank:	108 gallons - 2 tank(s)	Holding Tank:	40 gallons - 1 tank(s)
Fresh Water Tank:	150 gallons - 2 tank(s)		

### Accommodations

Total Cabins:	2	Crew Cabins:	1
Total Berths:	-	Crew Berths:	1
Total Sleeps:	1	Crew Sleeps:	1
Total Heads:	2	Crew Heads:	1
Captains Cabin:	No		

## DESCRIPTIONS

### Additional Information

**BUILT** 1956 BY BASS HARBOR BOAT, BERNARD, MAINE 46' X 14'8 X 6';

DISCUSSION IN *WOODEN BOAT* ARTICLE BY J. WILSON, ISSUE 93, PAGE 128 AND

'VOYAGING UNDER POWER,

R. BEEBE, 1975 *EDMONTON*, PGS 110, 112

**REBUILT**

2012/13 AT GRANT'S YARD, ORTUNA, FL; ASSISTED BY DISCUSSIONS WITH

ORIGINAL BUILDER

HULL SANDBLASTED TO BARE WOOD. OLD IRON BOATNAILS OSPHOED AND REPACKED WITH GLASS FIBER REINFORCED EPOXY. PLANKS REPLACED AS NECESSARY, SOME DUTCHMEN, AND 19 LAMINATED RIBS AND GENERAL REFASTENING WITH S/S SCREWS. LOWER PLANK ON BULWARKS REMOVED AND FALSE THROUGH DECK STANTIONS REMOVED. ENTIRE HULL SPRAYED WITH 4 COATS OF EPOXY. 4 LAYERS OF 18 OZ BIAX LAID IN POLYESTER RESIN AT KEEL, TWO LAYERS OVER HULL AND DECKS AND CABIN TOPS, FAIRED AND COVERED WITH 2 LAYERS OF 1 AND 1/2 OZ MATT, ALL FAIRED IN EPOXY. TWO COATS OF BARRIER PLUS TWO COATS OF BLACK BOTTOM PAINT. TWO COATS OF HIGH BUILD PRIMER AND TWO COATS OF SEMIGLOSS ABOVE THE WATER LINE. BEFORE WORK BEGAN, ALL CLEATS, HAWSE PIPES, WINDLASS, RIGGING, MASTS, HATCHES, CHAIN PLATES, ETC REMOVED, REBUILT AS NECESSARY AND REPLACED IN NEW BEDDING. NEW THROUGH HULLS INSTALLED ABOVE AND BELOW THE WATERLINE PROPERLY BEDDED AND BACKED AS NECESSARY. CONCRETE BALLAST REPOURED.

**MAIN ENGINE;**

ORIGINAL DETROIT 2 CYCLE 6-71 WITH APPROX 50 HOURS SINCE MINOR REBUILD - NEW INJECTORS, FUEL PUMP, SET VALVES, ETC. 3 TO 1 HYDRAULIC REDUCTION GEAR, 3 INCH SHAFT, NEW CUTLASS BEARING, 36 X 36 INCH 3 BLADED PROP. CRUISE SPEED AT 8 KNOTS AT 1300 RPM BURNING SLIGHTLY LESS THAN 3GPH. RACOR FILTER, ELECTRIC PRIMING PUMP. COMPRESSOR. SOLID ENGINE WHICH CARRIES 18LBS OIL PRESSURE AT IDLE AFTER 12 HOURS RUNNING.

**GENERATOR;**

7.5 KW ONAN PLUS 2.5KW EMERGENCY GAS HONDA ON FLYBRIDGE

**ELECTRICAL;**

BATTERY BANKS, ALL NEW. 2 BANKS OF 12V 31'S. ONE FOR HOUSE, ONE FOR GENNY START AND WINDLASS. 1 32V BANK FOR MAIN ENGINE START, SOME PUMPS AND INVERTER. ALL NEW TINNED WIRING, OLD WIRING REMOVED, AND NEW SWITCH BOARDS. 12V AND 32V CHARGERS ON 110V

**TANKAGE;**

WATER-TWO 150 GALLON S/S TANKS, ONE FORWARD, ONE AFT FOR TRIM, MOSTLY REPLUMBED, FILTRATION SYSTEM. FUEL-TWO 108 GALLON MONEL TANKS REPLACING RUSTED STEEL TANKS, ALL NEW LINES AND VALVES.

**LAYOUT.**

**FORPEAK**, ACCESS FROM DECK AND FORWARD STATEROOM.

FORWARD STATEROOM-DOUBLE 42 INCHES AT HEAD,32 INCHES AT FOOT, 6'4" OVERALL. 7 SHELVES, 4 DRAWERS, HANGING LOCKER. LIGHT AND AIR FROM HATCH PLUS PARTIAL EXPOSURE TO BUTTERFLY HATCH AND ROUND PORT. ACCESS TO HEAD WITH S/S SINK AND THE FORE HEAD, ALSO WITH ROUND PORT.

STATEROOM TWO, OFF GALLEY TO STARBOARD WITH ACCESS TO HEAD. SINGLE BUNK 28 INCHES BY 6'6", DRAWERS UNDER, SHELVES, TWO 18 X 8 INCH BRONZE PORTS.

**GALLEY**. MAGIC CHEF 4 BURNER STOVE WITH OVEN, PROPANE, WITH SHUTOFF AND SNIFFER. 11 CU FT MAGIC CHEF REFRIDGE/FREZ 110AC FROM SHORE, INVERTER,GENNY, LARGE S/S SINK WITH ONE VALVE H/C WATER, SALT WATER, SOAP DISPENSER, ALL IN TILE COUNTERS, 10 DRAWERS, 10 SHELVES AND MISC CUBBIES. MICROWAVE, COFFEE MAKER, TOASTER OVEN. LIGHT FROM PARTIAL BUTTERFLY EXPOSURE AND 2 8X18 INCH BRONZE PORTS.ALL FLOORING FORWARD IS CORK.UP 4 STEPS TO PILOT HOUSE.

**PILOT HOUSE/SALON-WHEEL**, NAV CENTER,DASH,CONTROLS FORWARD. AFT SECTION TWO SETTEES,ONE L SHAPED, ONE STRAIGHT, 5'6". CENTER TABLE WHICH UNFOLDS FOR DINING 48X44 INCHES, FOLDS FOR DESK OR CHART WORK, DROPS FOR COCKTAILS. ALL VERY LIGHT WITH WINDOWS ALL AROUND, SIDE DOORS.THIS AREA HAS AN A/C UNIT. FLOOR OPENS COMPLETELY FOR ENGINE ROOM WORK. THERE IS ALSO ACCESS THROUGH A HATCH UNDER THE L SETTEE. ENGINE OR HEAVY EQUIPMENT CAN BE REMOVED THROUGH A HATCH 6' X 40 INCHES IN THE SALON CEILING.CENTRAL VACUUM CLEANER. NAV CENTER- BENMAR COURSE KEEPER 210 AUTOPILOT, STANDARD DEPTH SOUNDER, UNIDEN 625C VHF WITH REMOTE, NAVEMAN GPS/CHARTPLOTTER 5500, 24 INCH WESTINGHOUSE TV W/DVD WHICH CAN BE HOOKED UP TO DISPLAY CHARTPLOTTER OR FOLDED UP TO OVERHEAD WHEN NOT WANTED. DANFORTH/WHITE 8 INCH COMPASS.EXTREMELY LOAD DUAL AIRHORNS FROM A 1930' FIRE ENGINE. DOWN 5 STEPS TO AFT CABIN.

**AFT CABIN**. PORT AND STARBOARD BUNKS 36X6', 9 DRAWERS, 6 CUBBIES, HANGING LOCKER, BOOK SHELVES. LIGHT FROM 2 18X8 INCH BRONZE PORTS AND OVERHEAD HATCH. HEAD WITH SEALAND HEAD, SINK, 3 LINEN SHELVES, 18X8 INCH BRONZE PORT. SEPARATE LARGE SHOWER 41X22 INCHES WITH TILED FLOOR,18X8 PORT, and EXHAUST FAN.

**DECK**.

POWER WINDLASS W/REMOTE. 3'3/8 INCH CHAIN SELF FEEDING TO FORPEAK. 2 150 3/4 INCH SPARE NYLON RODES. DANFORTH 40 MOUNTED ON DECK. 75 LB CQR ON BRONZE BOW ROLLER. 24 INCH WIDE SIDE DECKS, VERY LARGE AFT DECK 9' X 12' WITH 3 LARGE DECK BOXES FOR STORAGE. H/C DECK SHOWER.HUGE LAZARETTE 12' X 6' FOR

STORAGE, STEERING GEAR, 30GAL TANK FOR HEAD, SHELVES.ACCESSVIA AN 18 INCH WILCOX MANHOLE. SOUD WOOD MAINMAST W/ 100 PERCENTJIB IN GOOD CONDmON, S/S RIGGING, BRONZE CHAIN PLATES. SOLID WOOD MIZZEN, NEW SAIL, S/S STANDING RIGGING, BRONZE CHAIN PLATES. 2000 LB ELECTRIC REMOTE WHICH CAN BE RIGGED TO MIZZEN BOOM FOR HEAVY LOADS. 12&#39; ABI RIB W/ 9.9 ELECTRIC START 4 STROKE MERCURY OUTBOARD ON DAVITS. ALL NEW SAIL COVERS, BIMINI, FLYBRIDGE COVER, ETC. PLENTY OF DECK LIGHTING.

#### **FLYBRIDGE-**

10&#39;)(8.5&#39;. CAPTAIN&#39;S CHAIR, 2 PROPANE LOCKERS,LARGE DECK BOX, 2.5KW GENNY, LOTS OF STORAGE UNDER TILED DASH. COMPASS, NAVNAN 5500, UNIDEN625C VHF W/REMOTE, DEPTH SOUNDER, RADIO/CD PLAYER, SEARCH LIGHT, FULL ENGINE INSTRUMENTS, AUTOPILOT.

#### **NOTES-**

HEADS ARE USCG COMPLIANT,NO OVERBOARD DISCHARGE, DECK PUMPOUTS WITH A DECK MOUNTED MACERATOR WHERE LEGAL. ALLUSGC REQUIREMENTS,- FLARES, LIFE JACKETS, BELL, HORN, RUNNING LIGHTS, ETC ARE COMPLIANT. COLORS ARE-BLACK BOTTOM, WHITE HULL AND TOPSIDES, BLACK TRIM, GRAY NONSKID. BRONZE RAIL STANTIONS WITH S/S WIRE AND ATTACHMENTS ARE AVAILABLE BUT NOT INSTALLED. BOARDING LADDER MOUNTABLE EITHER SIDE MIDSHIPS.

#### **Brokers Comments**

This is your chance to own a Classic!

This Great Motor Sailor is Ready to GO!!!

***All the work has been done!!***

Step back in time and be the envy of everyone!!

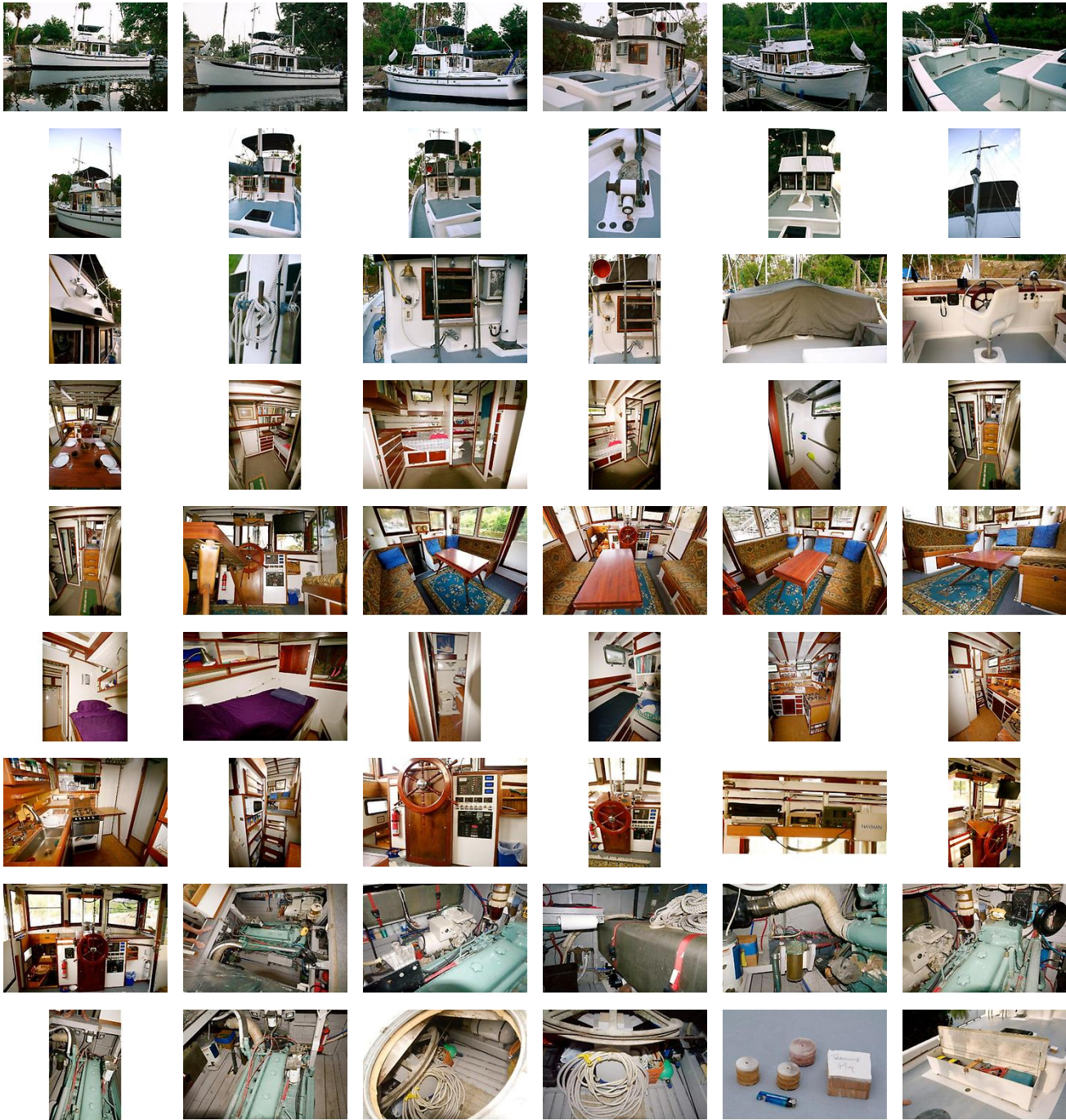
Call today!! This great classic won&#39;t last!!

#### **Disclaimer**

The Company offers the details of this vessel in good faith but cannot guarantee or warrant the accuracy of this information nor warrant the condition of the vessel. A buyer should instruct his agents, or his surveyors, to investigate such details as the buyer desires validated. This vessel is offered subject to prior sale, price change, or withdrawal without notice.



# GALLERY



# LOCATION MAP





---

**LEO THIBAULT**  
**Edwards Yacht Sales**  
127 E Charlotte Ave  
Punta Gorda, FL, US  
Office: 727.449.8222  
Mobile: 941.504.6754  
[Leo@EdwardsYachtSales.com](mailto:Leo@EdwardsYachtSales.com)

