



TOM MORTON
Edwards Yacht Sales
4 Cathedral Place
St. Augustine, FL, US
Office: 727.449.8222
Mobile: 904.377.9446
Tom@EdwardsYachtSales.com



2000 Dufour 50 Classic

Boat Type: Sloop

Address: Saint Simons, GA, US

Price: \$99,000



OVERVIEW

The Dufour 50 Classic will impress lovers of large traditional yachts. Her majestic silhouette, fine underbody and immense deck area, beamy cockpit, and large steering wheel gives her the looks of a big ocean racer. The Classic 50 design from the board of Berret Racoupeau proudly crowns the Classic range. Inside, accommodations are designed for easy circulation throughout the boat and to preserve intimacy for the passengers. Two large double cabins aft and three cabins forward are separated by a passageway, and all rooms are accessed by individual cabin doors. Three head compartments and an independent shower provide appreciable comfort with a large crew. The Classic 50 - with her oversized fuel and water tanks, improved handling, and unequaled control - predestine the Dufour 50 Classic for long passages.

Many recent improvements including new standing rigging and sails.

Not For Sale to US Citizens while in US Waters

SPECIFICATIONS

Basic Information

Manufacturer:	Dufour	Vessel Name:	Heliodore
Model:	50 Classic	Boat Type:	Sloop
Year:	2000	Hull Material:	Fiberglass
Category:	Sail	Hull Type:	
Condition:	Used	Hull Color:	
Location:	Saint Simons, GA, US	Designer:	
Available for sale in U.S. waters:	Yes	Flag of Registry:	

Dimensions & Weight

Length:	50 ft - 15.24 meter	Draft - max:	-
LOA:	-	Bridge Clearance:	-
Beam:	-	Dry Weight:	-

Engine

Make:	Volvo	Engine Type:	Inboard
Model:	TMD 22	Drive Type:	
Engine(s):	1	Fuel Type:	Diesel
Hours:	-	Horsepower:	78 (Individual), 78 (combined)
Cruise Speed:	-	Max Speed:	-
Range:	-	Joystick Control:	No

Tank Capacities

Fuel Tank: -	Holding Tank: -
Fresh Water Tank: -	

Accommodations

Total Cabins: -	Crew Cabins: 1
Total Berths: -	Crew Berths: 1
Total Sleeps: 1	Crew Sleeps: 1
Total Heads: -	Crew Heads: 1
Captains Cabin: No	

DESCRIPTIONS

Full Specifications

Description

- MAKE/MODEL: Dufour 50 Classic
- DESIGNER: Berret/Racoupeau
- BUILDER: Dufour
- WHERE BUILT: France
- YEAR BUILT: 2000
- FLAG: Canada
- LOA M 15.22/FT 50.00
- LWL M 12.67/FT 41.58
- BEAM M 4.6 /FT 15.08
- DRAFT 6 FT
- DISPLACEMENT: 14,000 kg/30,870 lbs
- KEEL BALLAST: 4,000 kg/9,260 lbs

Construction

- HULL: Glass Reinforced Plastic (GRP)
- DECK MATERIAL: Textured G.R.P. with teak in cockpit and on swim platform
- STEERING SYSTEM: Wheel
- RUDDER TYPE: Spade
- KEEL TYPE: Fin

Engine

- NO OF ENGINES: 1
- MAKE/AGE: Volvo Penta
- ENGINE HOURS: 5000
- MODEL: TMD 22
- HP: 78 hp, **turbo replaced 2012 w/300 hrs.**
- FUEL: Diesel
- NO. OF CYLINDERS: 4
- TYPE OF GEAR BOX(S): **Volvo Penta new 2012 w/300hrs**
- TYPE OF CONTROLS: Morse
- DRIVE TO PROP: Direct shaft drive
- TYPE OF PROP: Three blade fixed prop

Electrics

- VOLTAGE: 12 volt
- NO OF BATTERIES: 5 (4 house & 1 engine)
- METHOD OF CHARGING: Alternator
- ALTERNATOR: 14v/60A
- 2000W sine wave inverter

Tankage

- NO OF FUEL TANKS: 1
- MATERIAL: Alloy
- CAPACITY OF FUEL TANKS:
 - GALLONS: 132
- NO OF WATER TANKS: 2
- MATERIAL: Alloy
- CAPACITY OF WATER TANKS:
 - GALLONS: 184
- HOLDING TANKS: Yes
- **all tanks inspected and serviced 2012**

Water System

- H&C pressurized fresh water
- WATER HEATING SYSTEM: engine exchanger

Rig

- TYPE: Sloop Rig
- SPAR MAKER: Sparcraft
- SPAR MATERIAL: Aluminum
- STANDING RIGGING MATERIAL: Stainless steel wire
- **LAST REPLACED: 2012**
- RUNNING RIGGING MATERIAL: Cored braided line
- MAINSAIL REEFING: Slab reefing
- HEADSAIL ROLLER FURLING: Facnor

Sails

- **TYPE: Mainsail**
- **MAKER: Doyle**
- **YEAR: 2012**
- **TYPE: Genoa**
- **MAKER: Doyle**
- **YEAR: 2012**
- TYPE: Lazy bag
- MAKER: Doyle
- YEAR: 2005
- Aluminum whisker pole

Winches

- GENOA WINCHES: (2)
- MAKE: Lewmar 58's
- SPEED: 2
- SELF TAILING: Yes
- SHEET WINCHES: (1)
- MAKE: Lewmar 48
- SPEED: 2
- SELF TAILING: Yes
- HALYARD WINCHES: (1)
- MAKE: Lewmar 48
- SPEED: 2
- SELF TAILING: Yes

Accommodations

- NO OF BERTHS: 12
- DOUBLES: 4
- SINGLES: 4
- NO. OF CABINS: 5
- AFT CABIN: 2
- COOKER TYPE: Eno
- NO OF BURNERS: 2
- OVEN: Yes
- FUEL: Propane
- FRIDGE: Frigoboat engine driven cold plate
- SINK: (1) Double basin in galley
- NO. HEADS: (3)
- MAKE: Jabsco Parr
- HANDBASIN: (3)
- SHOWER: (3) plus transom shower
- UPHOLSTERY/COLOUR SCHEME: Tan cloth with blue pattern
- INTERIOR CONSTRUCTION/WOOD TYPE: Teak laminated marine ply
- WHICH LAYOUT VERSION: 5 cabin

Ground Tackle

- PRIMARY ANCHOR: Delta
- SECONDARY ANCHOR: Brittany
- WINDLASS: Electric
- MAKE: Lofrans Tigres 1200W /12v

Electronics

- COMPASS: Plastimo
- **Simrad NX 40 Chartplotter**
- ECHOSOUNDER: Autohelm Tridata
- SPEED: Autohelm Tridata
- LOG: Autohelm Tridata
- WIND: Windex
- **VHF:Raymarine RAY 55 with emergency locator**
- GPS: Garmin GPS 126
- AUTO PILOT: Raytheon Autohelm ST 7000+

General Equipment

- FIRE FIGHTING EQUIPMENT: Portable
- BILGE PUMPS: Manual & automatic
- SAFETY EQUIPMENT:
- NAVIGATION LIGHTS:
- GUARDWIRES/PULPIT/PUSHPIST:
- SWIMMING LADDER
- **Bimini new 21012**
- WARPS: (4)
- FENDERS: (4)
- BOATHOOK:

Seller's improvements 2102/2013

Heliodore was hauled out and the bottom painted and zincs changed in January 2013. It is in very good shape with no signs of osmosis. Thru hull fittings and spade rudder are in excellent shape.

Engine

The Volvo TMD 22 engine has been well maintained and serviced and has approximately 5000 hours.

A new Turbo has 300 hours.

A new transmission has approximately 300 hours.

All engine mounts were replaced and engine was realigned 200 hours ago.

A new alternator was installed 100 hours ago

Stainless shaft has a dripless stuffing box and has 300 hours on it.

Electric bilge pump is new.

Electric 2500 g/p/h emergency bilge pump is new

Improvements 2012 / 2013

From its previous listing and purchase survey that I include in attachment there are many important improvements which follow:

Standing rigging 2013

In January 2013 the mast was unstepped and all components were unfastened and inspected down to the interior chain plates while the vessel was in dry dock.

With a contracted top a US rigging company

- The standing rigging has been completely replaced for new oversized LEWMAR wire and hardware including turnbuckles etc.
- A twin backstay to the mast head was added for improved strength.
- New internal wiring in mast.
- A full rigging report is available.

Sails

The Doyle Main and Genoa sails have 6 month of use since new. The old main and Genoa are available as spares...

- A new Bimini Top has been added to the cockpit

Electronics:

- Raymarine autopilot works very well
- SIMRAD NX40 Chart plotter with Caribbean and East Coast North America charts
- Depth Sounder, speed log
- Raymarine RAY55 with emergency EPIRB locator VHF radio with new mast head antenna and spare antenna on pushpit.

Navigation Lights etc

- New LED anchor light at mast head
- All LED running lights and deck lights have been changed or serviced

Electrical

- A new 2 KW 110 volt sine wave inverter has been added to the electrical system
- A new 2 kw/h gasoline 110 volt generator for emergency use.

Spares:

- New spare starter motor for Volvo TMD 22 diesel engine.
- New spare 80 amps Alternator
- shore power electrical system
- Anchor electric winch spare
- Many new electrical, mechanical spare parts are included

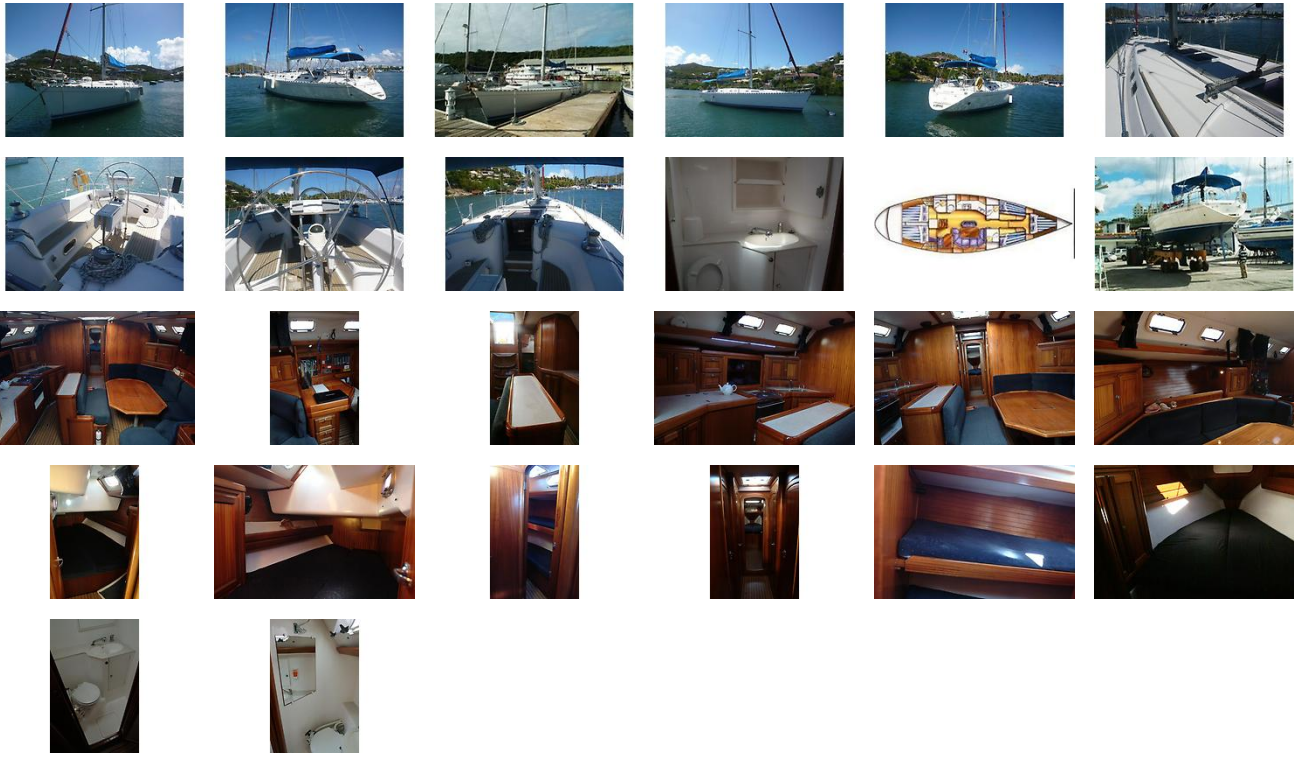
Maintenance etc

- All engine and fuel systems and transmission maintenance are to date.
- Plumbing and electrical maintenance done
- All fuel and water tanks have been serviced

Disclaimer

The Company offers the details of this vessel in good faith but cannot guarantee or warrant the accuracy of this information nor warrant the condition of the vessel. A buyer should instruct his agents, or his surveyors, to investigate such details as the buyer desires validated. This vessel is offered subject to prior sale, price change, or withdrawal without notice.

GALLERY



LOCATION MAP



TOM MORTON
Edwards Yacht Sales
4 Cathedral Place
St. Augustine, FL, US
Office: 727.449.8222
Mobile: 904.377.9446
Tom@EdwardsYachtSales.com

