



**LEO THIBAUT**  
Edwards Yacht Sales  
127 E Charlotte Ave  
Punta Gorda, FL, US  
Office: 727.449.8222  
Mobile: 941.504.6754  
Leo@EdwardsYachtSales.com



# 1997 Mainship 350/390 Trawler Twin Diesel

Boat Type: Trawler

Address: Naples, FL, US

Price: \$89,900



## OVERVIEW

***\$10,000.00 Price Reduction!! Don't Miss out!!***

This Mainship Is in Great Shape!! It has been cared for and it shows! Clean! Loaded With Equipment!! Great Layout!

Live Your Dreams!! This Mainship Won't Last Long!!

- **Twin Volvo 200 HP Diesels**
- **Onan 8KW generator with low hrs**
- **Bow Thruster**
- **Raytheon Electronics; Radar , Autopilot with remotes and Color Chartplotter!**
- **Full Canvas Enclosure**
- **Electric Windless**

## SPECIFICATIONS

### Basic Information

Manufacturer:	Mainship	Vessel Name:	Olga
Model:	350/390 Trawler Twin Diesel	Boat Type:	Trawler
Year:	1997	Hull Material:	Fiberglass
Category:	Power	Hull Type:	
Condition:	Used	Hull Color:	
Location:	Naples, FL, US	Designer:	
Available for sale in U.S. waters:	Yes	Flag of Registry:	

### Dimensions & Weight

Length:	39 ft - 11.89 meter	Draft - max:	3 ft 8 in - 1.12 meter
LOA:	39 ft 9 in - 12.12 meter	Bridge Clearance:	18 ft 8 in - 5.69 meter
Beam:	14 ft 2 in - 4.32 meter	Dry Weight:	22000 ft - 6705.6 meter

### Engine

Make:	Volvo	Engine Type:	Inboard
Model:	TAMD-41-P	Drive Type:	
Engine(s):	2	Fuel Type:	Diesel
Hours:	1700	Horsepower:	200 (Individual), 400 (combined)
Cruise Speed:	-	Max Speed:	-
Range:	-	Joystick Control:	No

### Tank Capacities

Fuel Tank:	300 gallons - 1 tank(s)	Holding Tank:	30 gallons - 1 tank(s)
Fresh Water Tank:	130 gallons - 1 tank(s)		

### Accommodations

Total Cabins:	-	Crew Cabins:	1
Total Berths:	-	Crew Berths:	1
Total Sleeps:	1	Crew Sleeps:	1
Total Heads:	-	Crew Heads:	1
Captains Cabin:	No		

## DESCRIPTIONS

### Manufacturer Provided Description

The Mainship 350 Trawler features a large, uncluttered flybridge with plentiful seating and storage. Wide molded fiberglass steps replace the standard ladders on the 350, offering safety and comfort. Bridge walk-throughs along with oversize handrails and raised toe rails add to safety. Belowdecks are custom cabinetry, thick pile carpeting and the finest in fabrics. A spacious salon, workable galley, easy to maintain heads and truly comfortable staterooms are incorporated to provide good flow and the most usable space afloat. Mainship motor yachts, part of the Luhrs marine group, is dedicated to bringing the best in design, comfort safety and reliability. Mainship's manufacturing processes include fabrication on-site of many components such as hard tops, rails, furniture and wiring, providing high-quality, prompt delivery and a lower price at the dealer. Mainship's five-year protection plan is one of the best in the industry including a transferable limited hull warranty.

## Vessel Walk Through

OLGA sleeps four in a two-stateroom / single head layout. From the cockpit, step up curved stairs to the extended fly-bridge with sliding glass doors leading into the salon. Move up to the fly-bridge to the roomy aft area perfect for lounging, with storage available. Centerline helm station with a Pompanette helm seat, two face to face bench seats, and a fold out table between the bench seats. Return to the cockpit through a large sliding glass door to the salon. The power distribution panel is conveniently located immediately to starboard. There is a chart table and sofa to starboard, and an entertainment center with storage and countertop space to port. Access the engine room through removable deck hatches in the salon sole. Moving forward on the same level into the galley area with full sized incliner sofa. Moving down through a companionway along the centerline from the salon you find the guest stateroom which features a queen-size bed to port and the head compartment with separate sit-down shower stall to starboard. The master stateroom is situated completely forward in the vessel and features a queen size island bed and convenient private access to the head compartment. The interior is brightened by natural light through large opening panel windows.

The generous cockpit is accessed from an extended swim/boarding platform aft and in through a transom door. The boarding platform, which is an extension of the hull, offers non-skid decking, a fold-out swim ladder, and a handheld shower. The cockpit has full overhead cover from the extended flybridge overhang as well as deck hatch access to the lazarette storage area with \* generator and steering gear access.

The extended fly bridge is very easily accessed by molded non-skid stairs into the starboard side of the cockpit. The aft portion of the bridge can be used for storage or lounging/sunbathing. This area extends completely over the cockpit, allowing for a spacious bridge deck not typical on a vessel of this size. The electronics mast, upper helm station, and entertaining areas are forward. Bimini top with full four-sided canvas and isinglass enclosure. Bench seats with storage underneath as well as propane storage for the galley. There is also a unique table with fold out leaves aft of the helm between the bench seats for entertaining or outdoor dining. All of the bridge seating, table, and the helm console itself have full green protective canvas weather covers and the bridge offers aluminum safety railing, courtesy lighting, and non-skid decking.

### Cockpit Features

- Self-bailing capability
- Non-skid decking
- Shore service power, water, TV, phone connections
- 2-Gunwale mounted rod holders
- Overhead and courtesy lighting
- Two storage compartments
- Water tank deck fill
- Handheld shower

### Salon

The salon is accessed through a large sliding glass door with screen from the cockpit.

Features a Ultra-leather upholstered sofa. Salon also has a high/low dining table with fold out leaves. There is an entertainment center to port, featuring Corian countertop space. The galley is on the same level as the salon and located forward and to port with the lower helm station across to starboard.

Engine room access is through three removable hatches in the salon floor. The salon, galley, and wheelhouse are open to one another and bright with natural light.

Other salon features include an overhead hand-hold rail and a separate AC unit.

### Galley

The galley-up is positioned forward and to port in the salon. Features include:

- NovaKool dual voltage refrigerator with freezer below
- Princess three-burner Electric cooktop
- Black & Decker Spacemaker coffeemaker
- Princess under-counter Electric oven

- Built-in Tappan microwave oven
- Corian countertops
- Large single basin sink
- Abundant storage cabinets and compartments
- Touch control 3- way light

### **Master Stateroom**

- Queen centerline bed
- 12,000 BTU Heat/air conditioning unit
- 2 Cedar-lined hanging locker
- 2 storage cabinets
- Countertop space
- Hinged vanity storage
- Book Rack
- TV /cable outlet
- Generous under-bed storage & drawers
- 2 Opening portholes with privacy covers
- Overhead deck hatch with screen and privacy canvas
- Reading lights
- Marine stereo speakers
- Clothes hooks

### **Engine Notes**

Twin Diesel.

### **Guest Stateroom**

- Large Queen size bed
- Overhead deck hatch with screen and privacy canvas
- Opening porthole with privacy cover
- Large storage space
- Cedar-lined hanging locker
- Reading lights
- Clothes hooks
- Air conditioning outlet

### **Head**

- Separate shower stall with glass door
- Convenient sit down shower
- Par electric flush head
- Overhead deck hatch with screen and canvas privacy cover
- Large adjustable vanity mirror
- Towel racks
- Sink
- Porthole with privacy cover
- Air conditioning outlet
- Storage compartments
- Clothes hooks

### **Upper and Lower Helm**

#### **Lower Helm**

The lower helm station is situated forward and to starboard in salon area.

- Three-panel windshield with opening center section
- covers for the windshield
- Two electric windshield wipers
- 12-volt receptacle
- Panel backlighting
- Hydraulic steering and large diameter wooden wheel
- Lenco trim tab controls
- Bow thruster controls
- Full VDO engine instrumentation
- Rechargeable spot light
- Electronics and Navigational Equipment

### **Upper Helm**

- Tilting helm console
- Wrap around wind deflector
- Bow thruster controls
- helm weather cover
- Beverage and binocular holders
- VDO full engine instrumentation
- Flag halyard
- Saturn 4" compass
- Hydraulic steering w/stainless steel wheel & Edson power knob
- Panel backlighting
- Lenco trim tab controls
- 12-volt receptacle
- SeaFire engine room fire extinguishing system monitor with engine override switch

### **Electronics**

# Raymarine C120 data screen -

# Garmin GPS Map 5212 data screen

# Garmin GOS Map 440S

# Ritchie compass

# Saturn compass

#### **# 2 Autohelm depth meters**

# Raymarine Ray pilot 650 auto pilot

# Raytheon NAV398 GPS/Loran -

# Two (2) Raytheon Ray210 VHF radios

# Trim tabs

# Horn

# Navigation lights

# Anchor light

# Steaming light

# Panel lights

# Search light bulb and up and down motion

# Garmin Radar

# Remote autopilot

## **Electrical**

- 110-volt AC panel and switch breakers
- 12-volt DC panel and switch breakers
- (2)30-amp shore service power cables with connections at foredeck and aft cockpit
- (2) 8D marine deep cycle house/cranking battery banks
- Generator starting battery
- Dedicated bow thruster gel cell batteries
- Battery isolator
- Battery chargers
- Onan 8KW diesel powered generator in sound enclosure approximately 900 hrs
- Racor fuel filter
- Fiberglass muffler
- 50-amp to dual 30-amp adapter
- 15-amp to 30-amp adapters (2)
- 110-volt outlets throughout
- Power distribution panel with generator controls, volt meters, polarity lights, and magnetic AC & DC circuit breakers

## **Mechanical**

- AC unit in main salon.
- Marine Air reverse cycle heat/air conditioning unit with digital thermostats and dehumidify mode. 16,000 BTU in forward cabin
- Bow thruster
- 110-volt water heater with engine heat exchanger
- Navigation and anchor lighting
- 12-volt pressure hot and cold water
- Waste holding tank with deck pump-out or overboard discharge
- Cable television and telephone shore connections
- Shore water connection
- Automatic/manual bilge pumps (3)
- Shower sump with pump
- Fuel shut-off valves
- High water alarm
- Fenders and lots of dock lines
- Coast Guard safety equipment
- Electric horns

## **Brokers Comments**

WOW!!! Don't let the price fool you! This Mainship Is in Great Shape!!

Clean!! Loaded With Equipment!! Great Layout!!

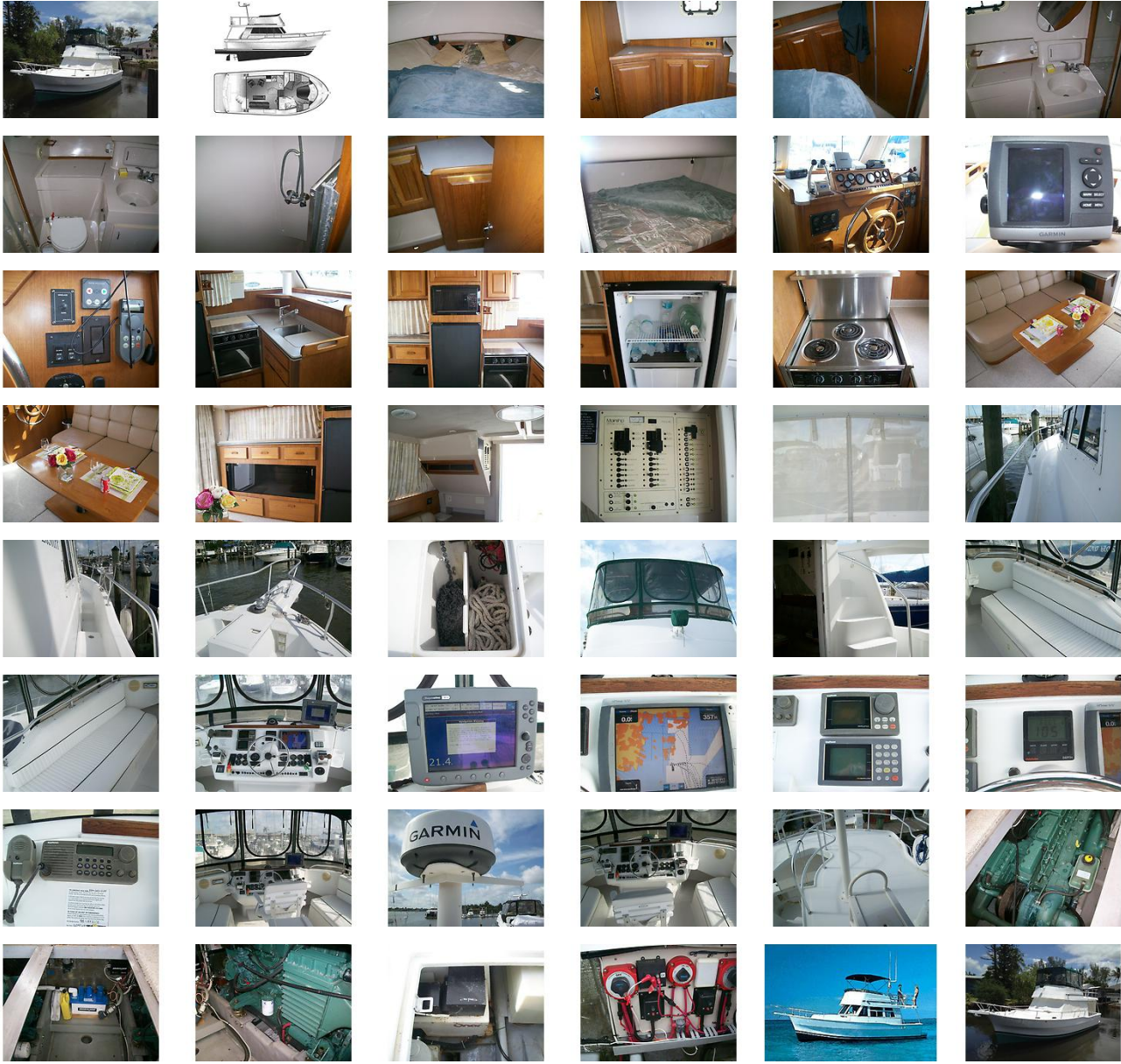
Don't Miss Out!! Call Today!! Live Your Dreams!! This Mainship Won't Last Long!!

**Disclaimer**

The Company offers the details of this vessel in good faith but cannot guarantee or warrant the accuracy of this information nor warrant the condition of the vessel. A buyer should instruct his agents, or his surveyors, to investigate such details as the buyer desires validated. This vessel is offered subject to prior sale, price change, or withdrawal without notice.



# GALLERY



# LOCATION MAP







---

**LEO THIBAUT**  
**Edwards Yacht Sales**  
127 E Charlotte Ave  
Punta Gorda, FL, US  
Office: 727.449.8222  
Mobile: 941.504.6754  
[Leo@EdwardsYachtSales.com](mailto:Leo@EdwardsYachtSales.com)

