



EDWARDS YACHT SALES

Edwards Yacht Sales

510 Brookside Drive

Clearwater, FL, US

Office: 727.449.8222

Mobile: (727) 449.8222

sales@edwardsyachtsales.com

1997 Broward

Boat Type: Motor Yacht

Address: Fort Lauderdale, FL, US

Price: \$1,195,000



OVERVIEW

BREAKAWAY is a pristine condition Broward that can accommodate up to 9 guests. She offers a vast interior with a smart use of glass, creating a real indoor/outdoor experience. Her extensive flybridge goes all the way aft, increasing the space available, making her ideal to entertain large groups.

SPECIFICATIONS

Basic Information

Manufacturer:	Broward	Vessel Name:	BREAKAWAY
Model:		Boat Type:	Motor Yacht
Year:	1997	Hull Material:	Aluminum
Category:	Power	Hull Type:	
Condition:	Used	Hull Color:	
Location:	Fort Lauderdale, FL, US	Designer:	Marc Michaels
Available for sale in U.S. waters:	Yes	Flag of Registry:	

Dimensions & Weight

Length:	107 ft - 32.61 meter	Draft - max:	6 ft 11 in - 2.11 meter
LOA:	100 ft - 30.48 meter	Bridge Clearance:	-
Beam:	20 ft - 6.1 meter	Dry Weight:	-

Engine

Make:	Caterpillar	Engine Type:	Inboard
Model:	3412	Drive Type:	
Engine(s):	2	Fuel Type:	Diesel
Hours:	4000	Horsepower:	1350 (Individual), 2700 (combined)
Cruise Speed:	14 MPH	Max Speed:	23 MPH
Range:	-	Joystick Control:	No

Tank Capacities

Fuel Tank:	7502 gallons - 1 tank(s)	Holding Tank:	-
Fresh Water Tank:	1000 gallons - 1 tank(s)		

Accommodations

Total Cabins:	4	Crew Cabins:	1
Total Berths:	-	Crew Berths:	1
Total Sleeps:	1	Crew Sleeps:	1
Total Heads:	-	Crew Heads:	1
Captains Cabin:	No		

DESCRIPTIONS

Accommodations

1997/2011 Broward MY, features a four-stateroom layout along with three crew aft. Her interior is done in Birds-Eye Maple joinery along with upgraded marble and mosaic tile baths throughout. The vessel just completed a major refit with several upgrades to include: new air conditioning, new watermaker, new audio/visual equipment and new tender on a hydro lift aft.

Powered by reliable 1350HP Caterpillar 3412, she cruises comfortably at 14 knots with an 18 knot top end speed. Additional large yacht options include twin Northern Light 40 KW generators, Naiad Stabilizers, American bow thruster and more!

Main Salon

The large main salon is very spacious and tastefully decorated. The interior wall paneling & cabinets are finished in bird's eye maple and beautifully designed and executed. The salon features a wet bar, entertainment center with large screen TV and audio/visual equipment. Forward of the salon is an on-deck powder room.

- Amtico teak & holly sole
- (2) Custom leather occasional chairs w/ottoman (#39;13)
- L-shaped leather sectional sofa
- Custom wet bar w/U-line refrigerator, KitchenAid icemaker & new granite top (#39;13)
- Entertainment center w/retractable cabinet housing; Sharp 70" flat screen TV, KVH DSS system, Panasonic surround sound receiver, Panasonic Blue Ray CD & Panasonic high definition speakers
- Custom overhead maple panels w/ halogen lights, mirror & moldings
- Custom Roman shades w/ electric remote
- Custom window treatments w/silhouette linen blinds
- Decorative maple cornices w/ recessed air conditioner vents
- Custom ABS windows w/V-Cool window treatment throughout
- Amtico flooring (#39;13)
- Area rug (#39;13)
- Cream marble floor covering w/ black granite inlays in companionway

On-Deck Day Head

- Custom marble flooring w/black granite inserts
- Cream marble vanity top
- Custom wall covering
- Decorative sink w/custom gold fixtures
- Overhead mirror

Dining Salon

The Dining Salon is light and airy and quite well designed with ample storage and convenient pass-thru to the galley. A large bow shaped dining table comfortably seats eight.

- Large bow shaped teak dining table, custom built by Jongert
- (8) Woven wicker wood frame dining chairs
- Wrap-around cabinets w/ebony columns & gold accents
- Custom 2" wood blinds
- Recessed overhead lights w/decorative moldings

Galley

- All cabinets refaced w/new doors, drawers & hardware (#39;13)
- Samsung quad-door refrigerator & freezer (#39;13)
- KitchenAid dishwasher (#39;13)
- LG oven/range (#39;11)
- GE microwave (#39;11)
- Krause double s/s sink & custom faucet (#39;13)
- GE trash compactor (#39;11)
- Custom 2" wood blinds
- Custom granite countertops (#39;13)
- Recessed overhead lighting

Master Stateroom

- King-size berth with upholstered headboard

- Entertainment center w/custom marble top, LG 60" flat screen TV, LG Blue Ray, Denon receiver & speakers
- Maple & mirror soffits overhead & on bulkhead behind bed
- Custom upholstered settee to stbd
- (2) Custom built-in maple dressers w/marble inlays
- (2) Built-in maple nightstands
- Shoji screen window treatments w/back lighting, port & stbd
- Vanity to port w/upholstered bench seat
- A/C soffits with accent lights
- (2) Walk-in cedar lined closets
- New geometric carpeting ('13)
- (2) New air handlers ('13)
- New digital A/C thermostat controls ('13)
- Master His & Her baths featuring marble vanities, frosted-glass enclosed shower, custom sink, gold fixtures, custom wallcovering, marble flooring, Microphor heads & bidet

VIP Guest Stateroom

- Queen berth w/custom spread & shams
- Upholstered bulkheads w/custom Magilite wallcovering ('12)
- Built-in vanity/desk w/drawer storage & custom bookshelves
- Entertainment center w/LG 20" TV, Alpine stereo receiver
- Double-door cedar-lined hanging locker
- New digital A/C thermostat controls ('13)
- Escape hatch to foredeck
- Private bath w/new steam shower, marble flooring, vanity, sink, new wallcoverings & new custom fixtures ('13)

Port Guest Stateroom

- Twin berth & (1) double berth, each w/storage below
- Single fold-away upper bunk (Pullman berth)
- Entertainment center w/ LG TV, Kenmore radio & CD player ('12)
- Shoji screen window treatment
- Built-in maple dresser
- Cedar-lined closet
- New digital A/C thermostat controls ('13)
- Private bath with new stone work, new granite top ('13), oversized shower, Shoji panel, custom wall covering & new fixtures

Starboard Guest Stateroom

- Twin lower berths w/drawer storage, custom spreads & shams
- Entertainment center w/TV, VCR, radio & CD player ('12)
- Built-in maple dresser
- Shoji screen window treatment
- Cedar-lined closet
- New digital A/C thermostat controls ('13)
- Private bath w/oversized shower w/new stonework, new granite top, custom wall covering & new fixtures ('13)

Companionway / Laundry

- Maytag 2000 Series washer & dryer ('11)

Crew Quarters

- Captain's cabin to port w/double berth & storage
- (2) Crew cabins stbd, (1) with upper/lower berths & (1) double berth
- Crew head w/shower
- New A/C handlers including crew head ('13)
- New LED overhead lights ('13)
- New digital A/C thermostat controls ('13)

Pilothouse

- New Amtico cherry & holly flooring ('13)
- New upholstered panels ('13)
- New granite tops at the helm ('13)
- Custom upholstered helm seat ('13)
- Built-in storage
- Upholstered bulkheads & overhead ('13)
- Custom black lacquer steering wheel & overhead grab rails
- Extensive electronics package outfitted w/ SiMon diagnostic system ('12)
- Customized controls

Electronics & Navigation Equipment

- All electronics installed by SMS ('13)
- Garmin radar
- (2) Garmin 8000 touchscreen w/Radar, Plotter & GPS
- GHC Garmin autopilot w/ remote & repeater display
- Garmin 300 VHF radio w/remote
- Icom 604 VHF radio ('13)
- Garmin Wi-Fi network throughout the vessel
- (4) Flat screen monitors for LG computer
- Naiad stabilizers control w/remote gauge (updated to digital controls)
- Bow thruster control
- Rudder position indicators
- Richie magnetic compass
- KVH Sat TV system / Model HD7 ('13)
- SiMon safety system w/audio & visual ('12)
- WAVE Wi-Fi network throughout vessel

Flybridge Electronics and Equipment

- (2) Wing stations w/controls, thruster, & start/stop switch
- Garmin touchscreen 7212 Radar/GPS, plotter & depth
- Garmin Autopilot ('13)
- American bow thruster
- ACR EPIRB
- Custom hardtop w/soft cover & aluminum frame ('13)
- Custom woven wicker bar w/new granite top, Isotherm refrigerator & icemaker (new '13), large Frigibar refrigerator/freezer & (3)
- new bar stools ('13)
- DCS gas s/s BBQ grill w/custom two bottle propane storage box underneath ('13)
- (2) Large settees w/new upholstery ('13)
- Centerline helm station w/roll top cover
- Oversized helm bench seat w/ new cushions ('13)
- Woven wicker sun pad w/umbrella ('13)
- New s/s Isotherm refrigerator & new Isotherm 40 ppd icemaker
- Nautical Structures 2000lb hydraulic davit/crane (new motor & pump '14)
- Custom powder coated safety rail around boat deck ('13)
- Circular stairwell from the aft deck

- Custom 2-piece hatch from pilothouse to flybridge
- Custom radar arch w/relief styling & custom lighting
- Custom cushions throughout ('13)
- White/blue LED lighting ('13)
- Custom Broward steaming light

Aft Deck

- Circular stairwell w/Flexiteek treads up to flybridge
- L-shaped bench seating w/new cushions & covers ('13)
- Bow shaped hi/lo teak dining table w/burl border & double stainless base
- Custom wet bar w/granite top, Isotherm refrigerator ('13), sink & (2) swivel bar stools
- Teak swim platform
- (2) Custom stainless bar stools w/ footrests & seat cushions
- Boarding gates, port & stbd
- Stairwell down to crew quarters w/custom grab rails
- Alpine overhead speakers
- (10) Recessed overhead spot lights
- New Flexiteek decks ('13)
- Fire pump outlet

Deck Equipment

- Nautical Structures Sea Crane 2000lb boom davit w/ power rotation (new motor & pump '14)
- 2013 Zodiac 15' tender w/60HP Yamaha O/B 4-stroke
- (2) Maxwell 4500 windlasses w/ 350' x 1/2" chain ('13)
- (2) 8-person life rafts
- Large storage lockers
- Power outlet on bow for 30 amp needs
- Flexiteek decks & walk-around decks ('13)
- Flood lights port & starboard
- Tow lights
- (6) Ocean LED underwater lights ('13)
- Fire pump outlet, fwd

Ancillary Machinery

- (2) Northern Lights 40KW generators
- Port genset rebuilt 2013 / Starboard genset rebuilt 2014 - Hours 8,000 (Jan 2018)
- Starboard electrical end rebuilt ('13)
- MasterVolt Mariner SS24/60-amp multi-charger/converter ('11)
- 2 Hubbell 100 amp/220v shore power connectors, port & starboard
- 2 Staco voltage regulators
- MasterVolt Mariner SS40 battery charger ('11)
- Capac electrolysis monitor
- Hitachi SJ-300 voltage transformer
- New gel cell batteries ('11)

Main Machinery

- Twin Caterpillar 3412, 1350 HP - Hours 4,000 (Jan 2018)
- Port engine rebuilt in 2013
- (3) Marine Air 5-ton chilled water compressors A/C system (new compressors '13)
- New A/C circulating pump ('13)
- (2) New A/C raw water pumps ('13)

- HPS Hydra-power bow thruster
- (2) Matrix 1200 GPD watermakers (13)
- Naiad stabilizers
- (2) Triple Racor fuel filters to engines w/vacuum gauges
- Alfa Laval fuel system
- ZF transmissions
- Lube oil transfer system
- Engine room air intake 24" multi-fan, corrosion resistant 10,000 CFM
- Ventilation air out 24" multi-fan, corrosion resistant 6,000 CFM
- (2) Water heaters, 40-gallon with circulating loop
- 110V electric/manual bilge pumps
- AC/DC fuel transfer system
- Electric fuel transfer pump to manifold
- Digital gauge fuel transfer meter
- Power steering pump with reservoir & filter
- (2) New Headhunter freshwater pressure pumps (13)
- Dry chemical fire extinguishers
- CCTV camera with remote
- Extended exhaust to the stern, improved performance of underwater exhaust outlet
- 12V bilge pump
- High water alarm
- New Diaframe black water pump (13)
- Halong fire suppression system in engine room
- (2) CO2 fire extinguishers in engine room

Exclusions

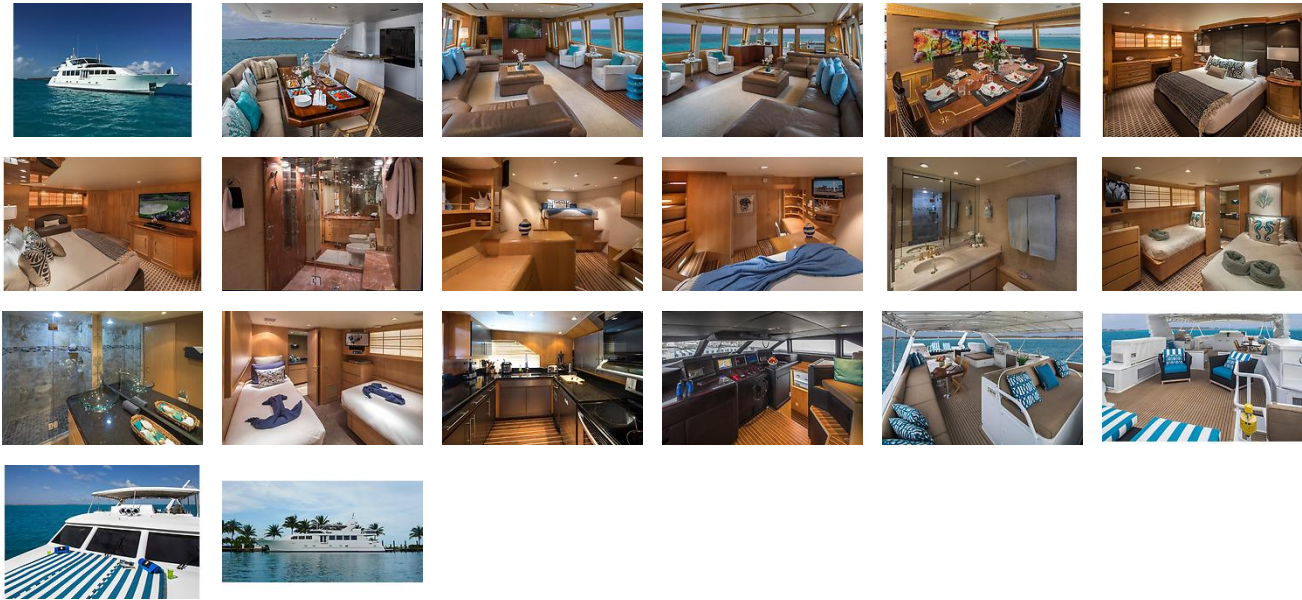
- Owner's personal items
- Artwork throughout

Disclaimer

The Company offers the details of this vessel in good faith but cannot guarantee or warrant the accuracy of this information nor warrant the condition of the vessel. A buyer should instruct his agents, or his surveyors, to investigate such details as the buyer desires validated. Hours listed may vary from actual hours due to recent use. Purchaser is encouraged to verify hours prior to purchase. This vessel is offered subject to prior sale, price change, or withdrawal without notice.

advanced co brokerage Florida power is pleased to assist you in the purchase of this vessel. This boat is centrally listed by Denison Yachting.

GALLERY



LOCATION MAP



EDWARDS YACHT SALES

Edwards Yacht Sales

510 Brookside Drive

Clearwater, FL, US

Office: 727.449.8222

Mobile: (727) 449.8222

sales@edwardsyachtsales.com