



EDWARDS YACHT SALES

Edwards Yacht Sales

510 Brookside Drive

Clearwater, FL, US

Office: 727.449.8222

Mobile: (727) 449.8222

sales@edwardsyachtsales.com

2003 Leopard 47

Boat Type: Catamaran

Address: Bridgetown, BB

Price: \$229,000



OVERVIEW

Roberston & Caine Leopard 47 built in 2003 as 2004 model year.

The Leopard 47 is the best combination of space, performance, quality and value. Built in Cape Town, South Africa and outfitted with US equipment, including complete electronics, generator and air conditioning. The Leopard 47 features a galley up, private and spacious heads, an aft platform with direct easy access to the cockpit, and great performance under power and sail.

This privately owned Leopard 47 is professionally maintained to a great standard. It is the 4 cabin 4 heads version, which sleeps 8 guests in cabins and a further 2 guests in the saloon.

Owners comments:

Supreme comfort and exceptional inside volume. Has all the desired high sea features, including great performance and solid construction. Easy handling and top performance and an immense cockpit for relaxing and entertaining. Fully maintained - no expense spared, privately owned.

SPECIFICATIONS

Basic Information

| | | | |
|------------------------------------|----------------|-------------------|---------------|
| Manufacturer: | Leopard | Vessel Name: | |
| Model: | 47 | Boat Type: | Catamaran |
| Year: | 2003 | Hull Material: | Fiberglass |
| Category: | Sail | Hull Type: | |
| Condition: | Used | Hull Color: | |
| Location: | Bridgetown, BB | Designer: | Simonis Voogd |
| Available for sale in U.S. waters: | Yes | Flag of Registry: | |

Dimensions & Weight

| | | | |
|---------|-------------------------|-------------------|------------------------|
| Length: | 47 ft - 14.33 meter | Draft - max: | 4 ft 1 in - 1.25 meter |
| LOA: | 47 ft - 14.33 meter | Bridge Clearance: | - |
| Beam: | 24 ft 4 in - 7.41 meter | Dry Weight: | - |

Engine

| | | | |
|---------------|--------|-------------------|--------------------------------|
| Make: | Yanmar | Engine Type: | Inboard |
| Model: | 4JH3E | Drive Type: | |
| Engine(s): | 2 | Fuel Type: | Diesel |
| Hours: | 6899 | Horsepower: | 39 (Individual), 78 (combined) |
| Cruise Speed: | - | Max Speed: | - |
| Range: | - | Joystick Control: | No |

Tank Capacities

| | | | |
|-------------------|---|---------------|---|
| Fuel Tank: | - | Holding Tank: | - |
| Fresh Water Tank: | - | | |

Accommodations

| | | | |
|-----------------|----|--------------|---|
| Total Cabins: | 4 | Crew Cabins: | 1 |
| Total Berths: | 5 | Crew Berths: | 1 |
| Total Sleeps: | 1 | Crew Sleeps: | 1 |
| Total Heads: | 4 | Crew Heads: | 1 |
| Captains Cabin: | No | | |

DESCRIPTIONS

Accommodation

Sleeps 8 in 4 double cabins with room for 2 more in the saloon.

4 heads

Cruisair air conditioning (with heating)

Beech wood finish throughout

Ground tackle

PRIMARY ANCHOR: Delta

SECONDARY ANCHOR: Bruce 33lb

WINDLASS: Electric

MAKE: Lofrans Tigres 1200W

Winches

GENOA WINCHES: 2

MAKE: Lewmar

SPEED: 54

SELF TAILING: Yes

ELECTRIC: No

SHEET WINCHES: 1

MAKE: Lewmar

SPEED: 44

SELF TAILING: Yes

ELECTRIC: No

HALYARD WINCHES: 2

MAKE: Lewmar

SPEED: 44

SELF TAILING: Yes

ELECTRIC: No

Galley

COOKER TYPE: Force 10

NO OF BURNERS: 3

OVEN: Yes

GRILL: Yes

FUEL: Propane

MICROWAVE: Sharp

FRIDGE: Seafroct engine driven chilly plate

FREEZER Seafrost engine driven chilly plate + new Waeco 12 V freezer compressor/holding plate is in the deep freeze.

Rig

TYPE: Sloop

SPAR MAKER: Sparcraft

SPAR MATERIAL: Aluminium

STANDING RIGGING MATERIAL: Stainless steel wire

LAST REPLACED: Original

RUNNING RIGGING MATERIAL: Core braide line

MAINSAIL REEFING: Slab reefing

HEADSAIL ROLLER FURLING: Profurl Titanium

SPINNAKER POLE: None

Water system

MANUAL: Freshwater

PRESSURISED: Freshwater

SEA WATER: None

WATER HEATING SYSTEM: YesEcho Tec 40gph engine driven water maker

Tankage

NO OF FUEL TANKS: 1

MATERIAL: Aluminium

CAPACITY OF FUEL TANKS: 560L

NO OF WATER TANKS: 2

MATERIAL: Plastic

CAPACITY OF WATER TANKS: 800L

HOLDING TANKS: Yes

Electrics

VOLTAGE: 110V/12V

NO OF BATTERIES: 2 engine, 3 house (new 2015)

CAPACITY: eng 2x 110Ah, house 3x 188Ah

MAKE: Geltech

YEAR: Unknown

METHOD OF CHARGING: Alternator

ALTERNATOR: Hitachi 80Ah

GENERATOR MAKE: Westerbeke

GENERATOR HOURS: 9639@ October 2015

SHORE POWER: Yes

SHORE POWER CABLE: Yes

SOLAR PANELS: 2 x 140W with 20 amp PWM charge controller

AIR CONDITIONING: (Yes) Cruisair 1 x 17000BTU Saloon, 2x 10000 BTU Fwd/Aft Cabins

Dimensions

LOA 14.2m/ FT 46'8"

LWL 12.99m/ FT 42'8"

BEAM 7.4m/ FT 24'3"

DRAFT 1.25m/ FT 4'1"

DISPLACEMENT: 21600lbs/9890kg

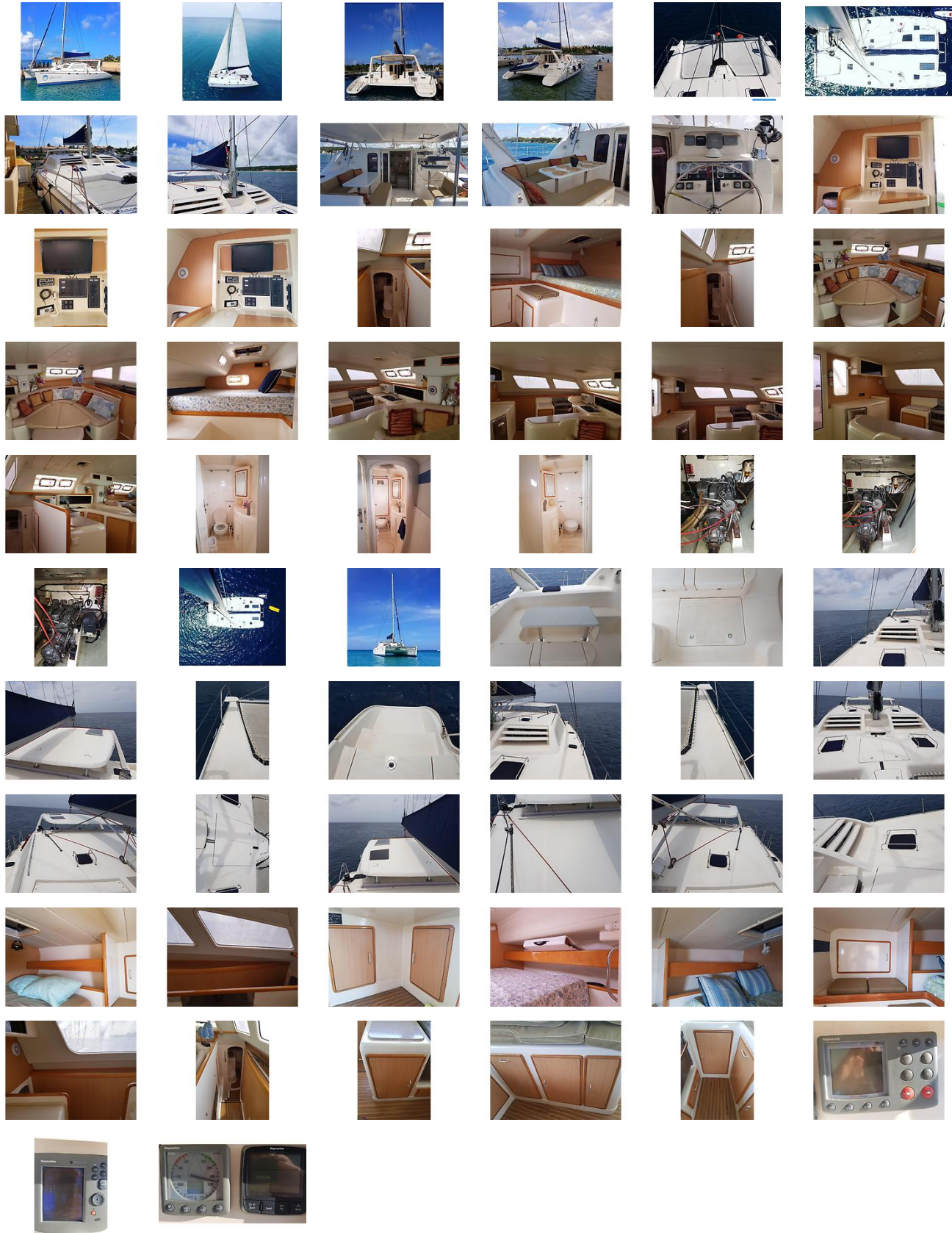
Disclaimer

Nicolle Associates offers the details of this vessel in good faith but cannot guarantee or warrant the accuracy of this information nor warrant the condition of the vessel. A buyer should instruct his agents, or his surveyors, to investigate such details as the buyer desires validated. This vessel is offered subject to prior sale, price change, or withdrawal without notice.

- This vessel is VAT not paid.
- As always photographs do not do justice so a viewing is highly recommended.
- This boat is lying in Barbados.
- © 2019 Nicolle Associates

Advanced co brokerage Caribbean sail & power cat is pleased to assist you in the purchase of this vessel. This boat is centrally listed by Nicolle Associates.

GALLERY



LOCATION MAP



EDWARDS YACHT SALES

Edwards Yacht Sales

510 Brookside Drive

Clearwater, FL, US

Office: 727.449.8222

Mobile: (727) 449.8222

sales@edwardsyachtsales.com