



## EDWARDS YACHT SALES

Edwards Yacht Sales

510 Brookside Drive

Clearwater, FL, US

Office: 727.449.8222

Mobile: (727) 449.8222

sales@edwardsyachtsales.com

# 2008 Privilege 615

Boat Type: Catamaran

Address: Fort Lauderdale, FL, US

Price: \$1,172,000



## OVERVIEW

Elixir was built in 2008, but not delivered to her original owner until 2010. After crossing the Atlantic to the Caribbean 2011 Elixir was based out of Trinidad where her owner lightly used her, and always had a professional captain onboard maintaining her. She has low hours on both her Yanmar's and her generator.

Her current owner has sailed her through the Caribbean, and up the East Coast of the United States. She has had a professional captain and mate onboard.

She is without a doubt the most well maintained and most lightly used Privilege 615 on the market with low hours on her engines and generator.

For more information on the yacht, and the build sheet please email the listing broker.

## SPECIFICATIONS

### Basic Information

Manufacturer:	Privilege	Vessel Name:	
Model:	615	Boat Type:	Catamaran
Year:	2008	Hull Material:	Fiberglass
Category:	Sail	Hull Type:	
Condition:	Used	Hull Color:	
Location:	Fort Lauderdale, FL, US	Designer:	Marc Lombard
Available for sale in U.S. waters:	Yes	Flag of Registry:	

### Dimensions & Weight

Length:	61 ft - 18.59 meter	Draft - max:	-
LOA:	61 ft 5 in - 18.72 meter	Bridge Clearance:	-
Beam:	30 ft 3 in - 9.22 meter	Dry Weight:	58000 ft - 17678.4 meter

### Engine

Make:	Yanmar	Engine Type:	
Model:	4BY	Drive Type:	
Engine(s):	2	Fuel Type:	Diesel
Hours:	-	Horsepower:	150 (Individual), 300 (combined)
Cruise Speed:	-	Max Speed:	-
Range:	-	Joystick Control:	No

### Tank Capacities

Fuel Tank:	396 gallons - 1 tank(s)	Holding Tank:	80 gallons - 1 tank(s)
Fresh Water Tank:	342 gallons - 1 tank(s)		

### Accommodations

Total Cabins:	4	Crew Cabins:	1
Total Berths:	4	Crew Berths:	1
Total Sleeps:	1	Crew Sleeps:	1
Total Heads:	4	Crew Heads:	1
Captains Cabin:	No		

## DESCRIPTIONS

### Manufacturer Provided Description

After the launch of our Flagship the PRIVILEGE 745, Alliaura Marine has launched, in the same lines, the PRIVILEGE 615. With her helmstation (2 as an option) at mi level between the fly bridge and the deck, and the sunbathing mattresses at the fly, the sailing passion will be easily shared in family and with friends. Her very spacious cockpit and cosy interior invite to enjoy a serene life onboard.

### Sails area

- Mainsail: 1335 sqft
- Genoa: 968 sqft
- Gennaker: 1614 sqft

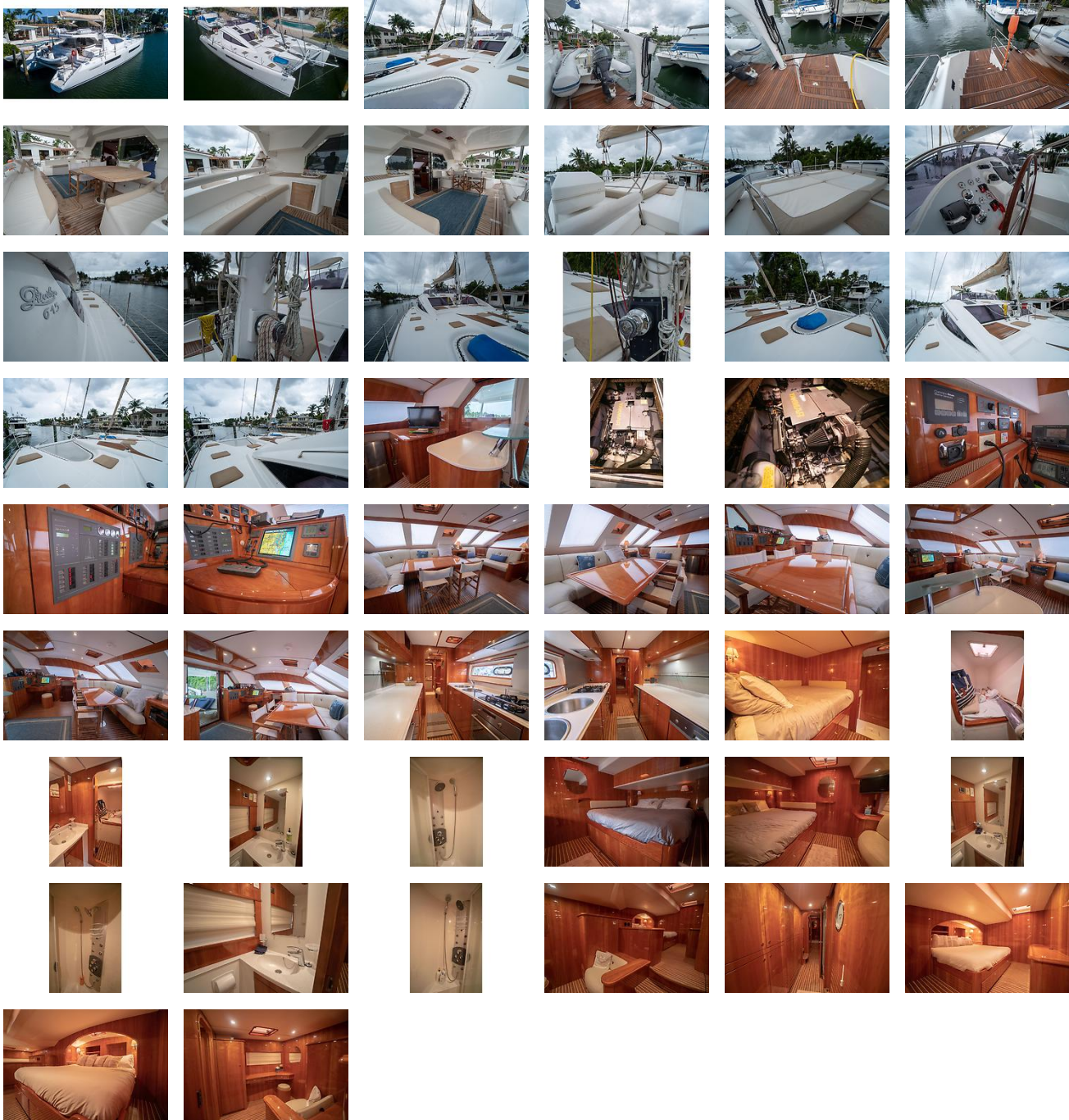
- Staysail: 355 sqft

## **Disclaimer**

The Company offers the details of this vessel in good faith but cannot guarantee or warrant the accuracy of this information nor warrant the condition of the vessel. A buyer should instruct his agents, or his surveyors, to investigate such details as the buyer desires validated. Hours listed may vary from actual hours due to recent use. Purchaser is encouraged to verify hours prior to purchase. This vessel is offered subject to prior sale, price change, or withdrawal without notice.

Advanced co brokerage Florida Sail is pleased to assist you in the purchase of this vessel. This boat is centrally listed by Denison Yachting.

# GALLERY



# LOCATION MAP





**EDWARDS YACHT SALES**

**Edwards Yacht Sales**

510 Brookside Drive

Clearwater, FL, US

Office: 727.449.8222

Mobile: (727) 449.8222

[sales@edwardsyachtsales.com](mailto:sales@edwardsyachtsales.com)

---