



EDWARDS YACHT SALES

Edwards Yacht Sales

510 Brookside Drive

Clearwater, FL, US

Office: 727.449.8222

Mobile: (727) 449.8222

sales@edwardsyachtsales.com

1994 Alden Custom Schooner

Boat Type: Schooner

Address: Maderia Beach, FL, US

Price: \$149,000



OVERVIEW

ESTATE SALE

"motivated seller who says bring all offers"

(LOCATION: Madeira Beach FL) *Sokol* is a 60 foot staysail schooner featuring a John Alden designed hull and a Colin Mudie deck layout and wheelhouse, designed as a durable offshore ocean cruiser. The boat was custom manufactured in 1984 and completed in 1994.

Sokol features an upscale interior with classic teak warmth. She has an open salon with large wrap around dinette to one side and a long settee to the other. Aft we have a full galley and nav station with chart table. The master aft cabin has settee, double berth, ensuite head with shower, hanging locker, and ample storage. Forward we have a bow cabin with v-berth, hanging locker, and storage. There is a double berth to port with forward head compartment to starboard with washer & dryer.

On deck we have a 12' bowsprit supported by rod rigging. Two CQR stainless steel plough anchors supported by rollers in the bow area with chain rodes and an electric windlass provide ample immediate anchoring capabilities. Standing rigging

consists of 3/8 inch stainless rod rigging supporting aluminum masts of 65 feet and 55 feet. Sail inventory consists of 1 old and 1 new mainsail, 1 staysail, 1 fisherman rig, 2 headsail roller jibs, 1 a storm jib and 1 a standard jib. Running rigging for sails runs to winches located within the wheelhouse.

Sokol has completed four crossings of the Atlantic Ocean and has seen Madeira Beach, Marathon, Key West, Freeport, Bermuda, The Azores, Gibraltar, Malta, Mallorca, Corfu, the Kornati Archipelago, Izola, Saint Lucia, Bonaire, Curacao, San Blas Islands, Providencia, Panama, Costa Rica, Nicaragua, Honduras, Guatemala, Belize, and Cozumel, to name just a few of the many visited exotic destinations. She is ready to continue her travels with a new owner and crew. Call now for more information and to schedule a showing.

SPECIFICATIONS

Basic Information

Manufacturer:	Alden	Vessel Name:	Sokol
Model:	Custom Schooner	Boat Type:	Schooner
Year:	1994	Hull Material:	Fiberglass
Category:	Sail	Hull Type:	
Condition:	Used	Hull Color:	
Location:	Maderia Beach, FL, US	Designer:	
Available for sale in U.S. waters:	Yes	Flag of Registry:	

Dimensions & Weight

Length:	54 ft - 16.46 meter	Draft - max:	6 ft 5 in - 1.96 meter
LOA:	60 ft - 18.29 meter	Bridge Clearance:	-
Beam:	16 ft - 4.88 meter	Dry Weight:	-

Engine

Make:	Westerbeke	Engine Type:	Inboard
Model:	W100	Drive Type:	
Engine(s):	1	Fuel Type:	Diesel
Hours:	-	Horsepower:	-
Cruise Speed:	-	Max Speed:	-
Range:	-	Joystick Control:	No

Tank Capacities

Fuel Tank:	350 gallons - 2 tank(s)	Holding Tank:	50 gallons - 2 tank(s)
Fresh Water Tank:	150 gallons - 1 tank(s)		

Accommodations

Total Cabins:	-	Crew Cabins:	1
Total Berths:	-	Crew Berths:	1
Total Sleeps:	1	Crew Sleeps:	1
Total Heads:	2	Crew Heads:	1
Captains Cabin:	No		

DESCRIPTIONS

Overview

Sokol is a 60 foot staysail schooner featuring a John Alden designed hull and a Colin Mudie deck layout and wheelhouse, designed as a durable offshore ocean cruiser. The boat was custom manufactured in 1984 and completed in 1994. This vessel has been Coast Guard documented within the USA.

The boat is constructed from 1 inch fiberglass inner and outer sandwich construction utilizing 25mm Airex foam cores, creating a 3 inch hull minimum with exceptional rigidity and robust construction.

The deck is constructed utilizing the same construction technique, in addition to 3/8 solid teak completely covering the deck area.

She has an aluminum wheelhouse with 3 solar panels aloft, 4 lexan windows, plus 2 side entries and an rear opening back with zippered canvas doors with windows. This wheelhouse provides all weather protection with the ability to be opened for maximum airflow.

The vessels interior has been constructed with only teak, mahogany, marine teak plywood and stainless steel hardware and screws throughout. Corian countertops and stainless sinks complement the looks of this boat

Accommodations

- Forward cabin with V-berth
- Portside double berth
- Forward head compartment with laundry
- Open salon
- Settee
- Nav station with chart table
- Wraparound dinette
- Full galley
- Master aft cabin with settee, double berth, ensuite head with shower

Deck & Hull

- 12' bowsprit
- Two CQR stainless steel plough anchors
- Chain rodes
- Electric windlass
- Standing rigging consists of 3/8 inch stainless rod rigging supporting aluminum masts of 65 feet and 55 feet

Sails & Rigging

- 1 old and 1 new main sail
- 1 staysail
- 1 fisherman rig
- 2 headsail roller jibs
- 1 storm jib
- 1 standard jib
- Running rigging for sails runs to winches located within the wheelhouse

Electronics & Navigation

- Autopilot
- Furuno radar

Mechanical & Electrical

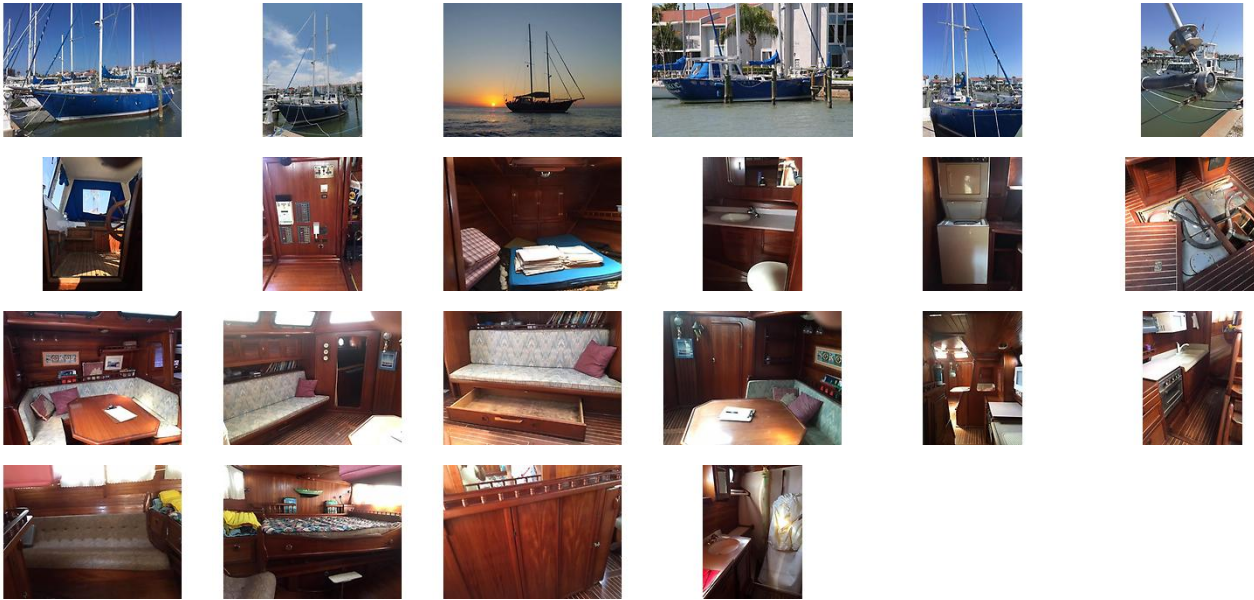
- Westerbeke W-100 6 cylinder diesel engine
- ZF/Hurth HBW-360 transmission
- 1½ inch propeller shaft through a No-Leak Seal
- 3 blade propeller
- Spare transmission and propeller
- Three Solar panels located on the wheelhouse
- Stern mounted wind generator
- Hydraulic steering system
- New coupler,new shaft,new cutlass bearing, new last drop shaft seal, and new propeller
- New 3/8 tempered glass windows

Disclaimer

The Company offers the details of this vessel in good faith but cannot guarantee or warrant the accuracy of this information nor warrant the condition of the vessel. A buyer should instruct his agents, or his surveyors, to investigate such details as the buyer desires validated. This vessel is offered subject to prior sale, price change, or withdrawal without notice.

Advanced co brokerage Florida Sail is pleased to assist you in the purchase of this vessel. This boat is centrally listed by Corporate Office - New Port Richey.

GALLERY



LOCATION MAP



EDWARDS YACHT SALES

Edwards Yacht Sales

510 Brookside Drive

Clearwater, FL, US

Office: 727.449.8222

Mobile: (727) 449.8222

sales@edwardsyachtsales.com