



**EDWARDS YACHT SALES**

**Edwards Yacht Sales**

510 Brookside Drive

Clearwater, FL, US

Office: 727.449.8222

Mobile: (727) 449.8222

sales@edwardsyachtsales.com

# 2002 Horizon Raised Pilothouse

Boat Type: Motor Yacht

Address: Fort Lauderdale, FL, US

Price: \$1,695,000



## OVERVIEW

### **NOT AVAILABLE TO US BUYERS WHILE IN US WATERS**

The raised pilothouse Horizon 105 MR. CAT located in Fort Lauderdale, FL can easily be shown at your request. Featuring a 5 stateroom layout with on-deck master and huge fly-bridge for entertaining. Recently serviced twin MTU 16V2000 having LOW hours making Mr. Cat the best Horizon 105 on the market. Evan Marshall designed interior shows in excellent condition with marble floors, spacious main salon with a fully stocked bar and dining table for 10.

\*\*\* There is visual damage to the bow from an docking incident -

## SPECIFICATIONS

### Basic Information

Manufacturer:	Horizon	Vessel Name:	Mr Cat
Model:	Raised Pilothouse	Boat Type:	Motor Yacht
Year:	2002	Hull Material:	Fiberglass
Category:	Power	Hull Type:	
Condition:	Used	Hull Color:	
Location:	Fort Lauderdale, FL, US	Designer:	Tommaso Spadolini
Available for sale in U.S. waters:	Yes	Flag of Registry:	

### Dimensions & Weight

Length:	105 ft - 32 meter	Draft - max:	7 ft 5 in - 2.26 meter
LOA:	105 ft - 32 meter	Bridge Clearance:	-
Beam:	23 ft - 7.01 meter	Dry Weight:	-

### Engine

Make:	MTU	Engine Type:	Inboard
Model:	16V2000M90	Drive Type:	
Engine(s):	2	Fuel Type:	Diesel
Hours:	1200	Horsepower:	1826 (Individual), 3652 (combined)
Cruise Speed:	21 MPH	Max Speed:	24 MPH
Range:	-	Joystick Control:	No

### Tank Capacities

Fuel Tank:	8450 gallons - 1 tank(s)	Holding Tank:	400 gallons - 1 tank(s)
Fresh Water Tank:	800 gallons - 1 tank(s)		

### Accommodations

Total Cabins:	5	Crew Cabins:	1
Total Berths:	-	Crew Berths:	1
Total Sleeps:	1	Crew Sleeps:	1
Total Heads:	-	Crew Heads:	1
Captains Cabin:	No		

## DESCRIPTIONS

### VESSEL OVERVIEW

The raised pilothouse Horizon 105 MR. CAT located in Fort Lauderdale, FL can easily be shown at your request.

Featuring a 5 stateroom layout with on-deck master and huge fly-bridge for entertaining. Recently serviced twin MTU 16V2000 having LOW hours making Mr. Cat the best Horizon 105 on the market. Evan Marshall designed interior shows in excellent condition with marble floors, spacious main salon with a fully stocked bar and dining table for 10.

This Horizon 105 offers large aft deck, two garages for jet skis, walk-around decks, large fly-bridge, on-deck master, stabilizers,

bow and stern thrusters, low hour MTU's and an immaculate interior that you will be proud to show.

\*\*\* There is visual damage to the bow from an docking incident - extent unknown.

\*\*\*\* Hours are assumed

\*\*\*\*\* **NOT AVAILABLE TO US BUYERS WHILE IN US WATERS**

## 2017/18 Updates

### ***Work that has been completed in 2017/18***

#### **2018**

Chiller #1 replaced water pump on 10/2018

Hot tub rebuild 3/2018

Replaced one of the (3) 24vt chargers. 1/2018

-New male and female shore cord connections 1/2018

-atlas maintenance, new digital meter, touch panel, 2 capacitors, inverter fan, motor fan, touchscreen interface. 7/2018

-replaced 4 additional batteries (bank not specified) 6/2018

-new a/c start capacitor 5/18

Haul out 6/18Haul out 6/18

- Hull Blister repairs (21k)
- prop speed
- seacocks/ strainers - removed and cleaned bottom strainers/ removed, cleaned and reinstalled hose assemblies from seacocks(4).
- painted raw water intake box
- Sea chest repair work

#### **2017**

-8 new house batteries 10/2017

-replaced water maker high pressure pump 11/2017

## **MAIN SALON**

Walking into the main salon from the s/s sliding doors you will immediately notice the volume this yacht offers. The main salon offers a large L shape white leather wrapped couch and single armchair chair and footrest. Engle & Olufsen stereo with surround sound speakers.

Marine Air Temperature controls

Window treatment for all salon windows.

A 40" TV on an electric pop-up lift can be seen near the wet-bar to starboard providing a U-line icemaker, sink and Engel refrigerator. Marble countertops and custom shelving with backlit lights makes for an elegant presentation for your fine crystal.

## **DINING**

Large teak dining table with seating for 10. Cabinets throughout providing plenty of space for fine China. Marble floors and an outlet for central vac. Access to the galley to port with a privacy door.

## **GALLEY**

The galley can be found on the port side forward of the dining area featuring marble countertops and floors with an open view off the port side. A sliding door provides privacy from the crew while cooking or servicing.

Siemens 4 burner glass top stove

Siemens oven with s/s door

Siemens s/s exhaust hood

Double sink with detachable faucet

(2) Refrigerators

(2) Pullout freezers

Deep freezer across from refrigerators

Broan trash compactor

Marine Air temperature control

Fire extinguisher

Watertight door to the walkaround deck off port side.

Ample storage throughout

## **DAY HEAD**

The day-head is located on the starboard side forward of the main salon. Immediate to the outboard side is a watertight door with deck access. Marble countertops and marble flooring with sink and head.

## **PILOTHOUSE**

The raised pilothouse can be accessed on your starboard side or from the fly-bridge. The comfortable bridge offers two adjustable helm seats, great visibility, large leather settee, and plenty of storage space.

Sharp fax machine

Panasonic ships phone

Mini M satellite communications

Raymarine RAY430 loudhailer

VHF with GMDSS

Radar

MTU displays

(2) Simrad CP52 monitors

Trac Stabilizers

(2) RMSD chain counters

Shipmate RS 8400

Hart systems tank tender

Bennett trim tab controls

(3) Windshield wiper controls

Fireboy Engine shutdown system

Water gauges

Fuel gauges

Simrad wind indicator

Simrad rudder indicators

Simrad compass

Simrad Robertson AP20 autopilot

(12) Bilge pump switches

Danforth Constellation compass

Marine Air temperature control

AC & DC electrical panels.

(2) Adjustable helm chairs

Access to the fly-bridge

## **STATEROOMS**

### **On-Deck Master Stateroom**

The on-deck master stateroom separates this yacht from the fleet featuring a King size bed , love seat and pop-up TV on an electric lift with satellite TV, custom fitted desk with chair with steps leading to the private bath. The amount of closet space will quickly be noticed providing more than enough space even for a live-aboard. A overhead sky-light and large windows provide plenty of light into the spacious master suite.

Moving forward down a few steps leads into the ensuite master head with full size shower and standalone jet jacuzzi tub surrounded by heated marble floors and marble countertops. Two side-by-side his and hers sinks.

Laundry: Washer/Dryer

### **Guest Stateroom (port forward)**

Twin double berths

Ensuite head with granite floors and countertops

Marine Air temperature control

Panasonic phone

Yamaha stereo system

Clayton TV

Hutch digital satellite receiver

Large two door hanging closet with mirror

Central vac

**Guest Stateroom (stb. forward)**

Queen size berth

Ensuite head with marble floors and countertops

Vanity

Large two door hanging closet with mirrors

Panasonic phone

Yamaha stereo system

Clayton TV

Hutch digital satellite receiver

Central vac

**Guest Stateroom (stb. aft)**

Queen size berth

Ensuite head with marble floors and countertops

Marine Air temperature control

Large two door hanging closet with mirrors

Panasonic phone

Yamaha stereo system

Clayton TV

Hutch digital satellite receiver

Central vac

**Guest Stateroom (port aft)**

Twin double berths

Ensuite head with granite floors and countertops

Marine Air temperature control

Large two door hanging closet with mirrors

Panasonic phone

Yamaha stereo system

Clayton TV

Hutch digital satellite receiver

## **FLYBRIDGE**

The massive fly-bridge can be accessed from either the aft deck or raised pilothouse. Offering a huge amount of outdoor space included with a full wet bar, Jacuzzi, two teak tables with wraparound seating and tender storage with davit.

Teak deck

Alpine stereo system and speakers

Sunpads

Two person jet Jacuzzi

Fiberglass hardtop

Freshwater washdown

Courtesy lighting

Davit

Ample storage

## **Helm Station**

(2) Simrad DS42 displays

Simrad wind indicator

Simrad autopilot

(2) Chain counters

ZF Marine controls

Simrad rudder indicator

MTU displays

American bow and stern thruster controls

Bennett trim tab controls

Simrad compass

Danforth Constellation compass

## **Bar**

s/s sink

(2) Miele grill tops

(1) two burner Miele stove top

Engle ice-maker

Engle refrigerator

Storage

Teak countertop

Three fixed bar stools

## **MECHANICAL EQUIPMENT**

(2) MTU 16V2000 (Approx. 1200 hours)

ZF Gearboxes

Generators:

Onan 22.5 kW 50 Hz .

Onan 22.5 kW 50 Hz .

Onan 22.5 kW 50 Hz .

Air Conditioning: (4) Marine Air

Watermakers: (2) Sea Recovery Aqua Whisper

ATLAS Shorepower Frequency converter

Stabilizers: Trac

Bow Thruster: American Bow Thruster

Stern Thruster: American

Fuel Filtration: Racor

## **ELECTRICAL SYSTEM**

220 V 50 Hz

Output: 2500 W

(3) Battery Chargers

(8) Starter batteries

(3) Generator batteries

ATLAS Frequency Converter

(3) Onan Generators 22.5 kW

Main Engine Starting Batteries NEW 2017

Generator Starting Batteries NEW 2017



## **ELECTRONICS**

On-board telephone system

Navtex weather

Mini M Sat. communications

AIS identification

Panasonic ships phone

Mini M satellite communications

Raymarine RAY430 loudhailer

Raymarine VHF

Radar

(2) Simrad CP52 monitors

(2) RMSD chain counters

Shipmate RS 8400

Hart systems tank tender

Bennett trim tab controls

Fireboy Engine shutdown system

Water gauges

Fuel gauges

Simrad wind indicator

Simrad rudder indicators

Simrad compass

Simrad Robertson AP20 autopilot

Danforth Constellation compass

AC & DC electrical panels.

## **CREW QUARTERS**

### **Starboard Berth:**

Sleeps 3 with double size berth and single bunk.

Reading lamps

Lockers

Ensuite head

### **Port Berth:**

Sleeps two with bunks.

Ensuite Head

**Crew Galley:**

Settee with seating for 6

Adjustable dining table can be converted into additional berth.

Miele stovetop

Miele microwave

Sink

Miele refrigerator/freezer

Siemens Dryer

Siemens Washing Machine

Marine A/C temp. control

**DECK EQUIPMENT**

Walk around teak decks

(2) Jet ski garages from swim platform

Anchor Windlass System: (2) Maxwell 6000

(2) Deck Capstans located aft deck

Passerelle located on aft deck

Davit on fly-bridge

Boarding gates, port and starboard,  
forward and aft

Stainless steel cleats

s/s horns

Aft swim deck cleats

Retractable swim ladder

Courtesy lighting

## **LAUNDRY**

Located in the crew quarters:

Washing Machine: (1)

Dryer: (1) Stemens

Located in the foyer:

Washing Machine: (1)

Dryer: (1) Stemens

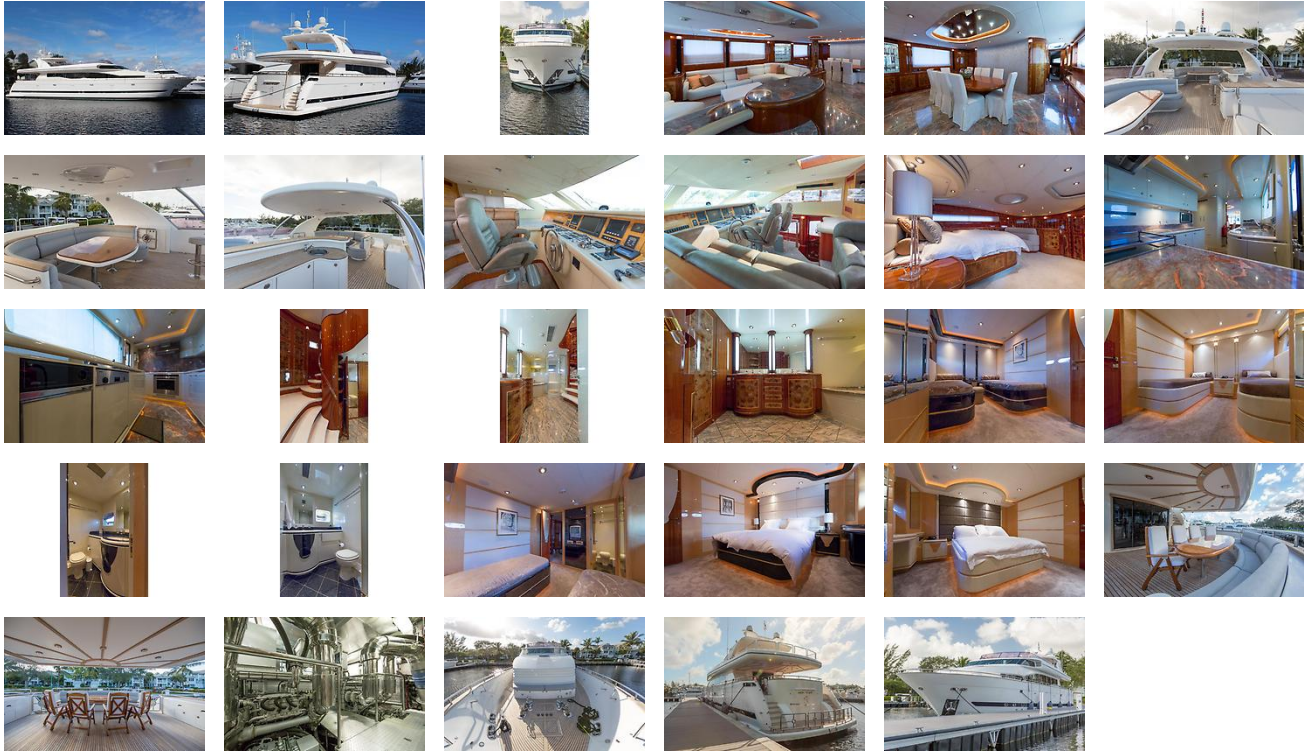
## **Disclaimer**

### **NOT AVAILABLE TO US BUYERS WHILE IN US WATERS**

The Company offers the details of this vessel in good faith but cannot guarantee or warrant the accuracy of this information nor warrant the condition of the vessel. A buyer should instruct his agents, or his surveyors, to investigate such details as the buyer desires validated. This vessel is offered subject to prior sale, price change, or withdrawal without notice.

advanced co brokerage Florida power is pleased to assist you in the purchase of this vessel. This boat is centrally listed by 26 North Yachts.

# GALLERY



# LOCATION MAP



## EDWARDS YACHT SALES

Edwards Yacht Sales

510 Brookside Drive

Clearwater, FL, US

Office: 727.449.8222

Mobile: (727) 449.8222

sales@edwardsyachtsales.com