



EDWARDS YACHT SALES

Edwards Yacht Sales

510 Brookside Drive

Clearwater, FL, US

Office: 727.449.8222

Mobile: (727) 449.8222

sales@edwardsyachtsales.com

2018 Leopard 48

Boat Type: Catamaran

Address: Ft Lauderdale, FL, US

Price: \$780,000



OVERVIEW

Price Reduced! 2018 Leopard 48 Catamaran Owner's Version available now!

Ready to realize your cruising dreams now and not in two years when a new catamaran will be ready? This yacht will allow you to realize that dream right away and do so in style and comfort! The Leopard 48 Owners version is designed to take a couple, or a family, for extended cruising while bringing the comforts of home along. Once you have experienced the wonderful forward door and cockpit found on the Leopard 48 you will never be content to sit in the back again!

A couple bought this beautiful 2018 Leopard 48 Owners Version brand new, took delivery of it at the beginning of 2018, and completed commissioning and \$100,000 outfitting at Just Catamarans in Ft. Lauderdale in time to do one season in the Bahamas. They have decided to purchase a larger yacht and thus have made this, literally better than new, Leopard 48 available. "Odyssea" is outfitted with everything that you need for world cruising and more, including: upgraded 57hp engines, Spectra 400 watermaker, 1260 watts Solar, AIS, composite teak cockpit decking, full compliment of spares and washer/dryer. Even better, it has already had its shake down cruise with a few months in the Bahamas!

Reap the rewards of time and money spent to commission and outfit a world cruising catamaran that is ready and able for your cruising adventures! Start realizing your sailing dreams today!

SPECIFICATIONS

Basic Information

Manufacturer:	Leopard	Vessel Name:	Odyssea
Model:	48	Boat Type:	Catamaran
Year:	2018	Hull Material:	Fiberglass
Category:	Sail	Hull Type:	
Condition:	Used	Hull Color:	
Location:	Ft Lauderdale, FL, US	Designer:	Robertson & Caine
Available for sale in U.S. waters:	Yes	Flag of Registry:	

Dimensions & Weight

Length:	48 ft - 14.63 meter	Draft - max:	4 ft 7 in - 1.4 meter
LOA:	48 ft 5 in - 14.76 meter	Bridge Clearance:	-
Beam:	25 ft - 7.62 meter	Dry Weight:	-

Engine

Make:	Yanmar	Engine Type:	Inboard
Model:	Yanmar 57 HP	Drive Type:	
Engine(s):	2	Fuel Type:	Diesel
Hours:	-	Horsepower:	57 (Individual), 114 (combined)
Cruise Speed:	-	Max Speed:	-
Range:	-	Joystick Control:	No

Tank Capacities

Fuel Tank:	185 gallons - 2 tank(s)	Holding Tank:	32 gallons - 2 tank(s)
Fresh Water Tank:	206 gallons - 2 tank(s)		

Accommodations

Total Cabins:	3	Crew Cabins:	1
Total Berths:	-	Crew Berths:	1
Total Sleeps:	1	Crew Sleeps:	1
Total Heads:	3	Crew Heads:	1
Captains Cabin:	No		

DESCRIPTIONS

Detailed Specs, Equipment and Information

Dimensions

LOA: 48 ft 5 in

LWL: 45 ft 5 in

Beam: 25 ft

Draft 4 ft 7" in

Displacement: 37,480 lbs

Hull Shape: Catamaran

Engines

Total Power: 114 HP (upgrade from std 90Hp)

Engine 1:

Engine Type: Inboard

Engine/Fuel Type: Diesel

Engine Power: 57 HP

Engine 2:

Engine Type: Inboard

Engine/Fuel Type: Diesel

Engine Power: 57 HP

Engine Hours: Port 382.3 Starboard 382.8 (as of 12/17/18)

Tanks

Fresh Water Tanks: 206 Gallons (in two tanks)

Fuel Tanks: 185 Gallons (total in port and starboard tanks)

Holding Tanks: 32 Gallons

Manufacturer Provided Description

Awarded Cruising World's Best Boat of the Year when introduced at the Annapolis Boat Show in 2013, and built by Robertson and Caine, the Leopard 48 is a blue water cruising catamaran that combines spacious living accommodations and high quality fittings. The raised helm station is located in the hard top roof with open access to the cockpit and all controls lead aft, for excellent visibility and ease of maneuvers. The starboard hull is entirely dedicated to the owner, with a large private cabin, study area, separate head and shower room and attractive light wood finishes throughout. The port hull accommodates two spacious guest cabins each with en suite head and separate shower. The signature 'walk-through' access to the roomy forward cockpit completes this popular model.

Fittings and Fixtures & Extras

- Custom additional storage compartments in saloon floor and in galley
- Artesian faux leather upholstery
- High quality Oceanair Skysol interior saloon blinds, front and sides
- Saloon table convertible to a coffee table or converts to a standard double bunk
- Full length mirrors in each cabin
- Extra storage lockers in owner's stateroom
- Upholstered ottoman at study desk in owner's stateroom
- Upgraded custom mattresses (organic cotton) both aft staterooms
- (6) Custom sheet sets for mattresses
- Plasdeck composite decking forward and aft cockpits and all steps.
- All heads fresh water flush (selectable salt or fresh)
- (2) Macris underwater lights
- (2) Dual color floodlights rear cockpit
- Garmin cameras fore and aft

- Spectra Newport 400 MKII water-maker (17gph)

Galley

- Corian heat-resistant galley worktop surfaces
- Single lever faucet c/w pull out hose
- Double stainless steel sink
- Water filter
- 2 - door front-opening fridge / freezer 12v refrigeration
- Additional 12v refrigeration in cockpit
- Microwave
- 110v Icemaker
- ENO Gas cooker 3-burner c/w oven & broiler
- Magma stainless steel propane BBQ grill with cover
- Gas solenoid shut-off valve with control at switch panel & warning light at cooker
- (2) Gas cylinders & regulator in dedicated locker
- Separate garbage bin locker with top access
- Stowage space in shelf lockers & drawer units
- Corian bar counter

Interior/Exterior Comfort Features

- CruiseAir 110v air conditioning / heat / dehumidify throughout the boat with separate control units for each hull and saloon (40,000BTU total)
- (1) 16,000BTU CruiseAir in main saloon
- (2) 12,000BTU CruiseAir units, one in each hull
- Separate (2) 11-gal hot water heaters in each hull
- Spectra Newport 400 MKII water-maker (17gph)
- Three (3) heads with showers
- Stern shower with Hot & Cold
- (3) 12v Jabsco electric flush toilets (fresh water)
- Splendide 2100XC washer/dryer
- Custom removable Eisenglass dodger and full enclosure for helm
- Custom aft cockpit cushions and shade awnings
- Custom forward cockpit cushions
- Acrylic windows
- Removable shade covers for coach roof side windows
- Aft cockpit side and back shades curtains
- Custom removable sun shades for side windows, custom cordless pleated shades in saloon side windows
- Extended swim ladder
- Daylight balanced LED lighting throughout
- Silent electric fans in saloon and all cabins
- Integrated retractable sunshades and screens on hatches
- LPG gas outlet on stern rail for BBQ
- Refrigerator in aft cockpit 12v

On Deck Features

- Full lifelines with stanchions, bases, port & stb gates
- (4) 30ft (2) 50# 3/4" docklines, (6) fenders, (2) boat hooks
- 1500w vertical windlass c/w wireless and hand-held remote and optional up/down foot button on deck
- Chain counter at helm station with up/down controls
- Anchor roller fitting c/w chain wear plates
- Anchor bridle with chain hook
- Rocna 88# primary anchor with stainless steel swivels, 230 ft of 3/8" chain
- 55lb Delta anchor backup
- Fortress FX55 anchor
- Deck Wash down system, selectable salt or fresh
- Sliding companionway door
- Stern swim ladder
- 2 x Halyard winches - Lewmar 44CST (on mast)

- 2 x Primary sheet winches - Electric Lewmar 54CST
- 4 x Folding pad eyes to allow for Gennaker tackle
- Custom stainless steel davit system with tackle and electric winch.

Navigation/ Communications

- Raymarine a125 12" MFD color chart plotter with WiFi
- Raymarine autopilot with P70 control head with wireless remote at Nav Station
- Raymarine 18" 4kW HD Color radar 48nm range (mounted on mast)
- Raymarine i70 color instruments for wind, depth and speed
- Hull mounted Airmar depth transducer
- AIS: Raymarine AIS650 transponder with dedicated antenna
- Raymarine wind transducer at masthead
- XM Weather component installed
- Ritchie compass
- Rouge Wave Wi-Fi booster with antenna on spreader
- Raymarine 60 VHF 25w radio (helm and nav station)
- Chart table surface with light
- Instrument and switch panel
- Barometer and Tide clock
- Garmin C-10 rear-view camera in cockpit, displays on Raymarine MFD
- Garmin GC-10 forward camera in forward cockpit, displays on Raymarine MFD

Electrical

- 110v Shore Power with (2) 50ft 30A cables
- 110v Y&Y connector: two 30A to one 50A
- Northern Lights 9KW Generator (128 hours)
- (4) Lifeline AGM 4D batteries (210Ah each)
- 2 x Engine start batteries
- Magnum 12v 2000 watt Inverter / 100A battery charger
- Four (4) 315 watt LG solar panels (1260 watts Total Solar)
- Victron MPPT solar controller
- Courtesy lights at stairways
- Bi-colour & stern navlights
- Compass light at helm position
- 12v DC switch panel
- 12v outlet sockets and USB outlets at switch panel and at helm station
- 2 x Fuel tank gauges at helm position
- 2 x Alternators, high output 115aH
- 110v outlets throughout, including GFI outlets in each head.

Engines

- Double lever throttle / gearshift control
- 2 x Engine room ventilation fans and ducting
- 2 x Yanmar 4JH57 57hp diesel engines with sail drives (Total power 114HP)
- 2 x Propellers fixed bladed
- 2 x Fuel filter / water separators
- 2 x Fuel tanks aluminum 185 US gallons total capacity
- 2 x Siphon breaks
- 2 x Exhaust skin fittings (s/s)
- 2 x Exhaust water locks
- 2 x Cooling water inlet strainers

Running Rigging and Sails

- Dual Mainsheet (3:1 purchase)
- (2) Lewmar electric winches at helm
- Main boom topping lift
- Mainsail outhaul and 2 reefs
- 2 x Genoa sheets
- 3 x Halyards (main, genoa & spare)

Mast, Rigging and Sails

- Natural anodized mast
- Windex wind indicator
- Mainsail full battened with 2 reefs
- Antal mast slider system
- Stackpack system for mainsail cover
- 120% Furling genoa
- Profurl roller furler

Safety Package

- Viking 8UKL 8-person emergency off-shore life raft (next service date 12/20)
- GlobalFIX iPRO EPIRB emergency transponder
- (12) type 1, 2 and 3 Lifejackets
- (3) Fire Extinguishers
- Harnesses (6), teathers(6)
- LifeSling safety throw ring and retrieval system
- (4) automatic electric bilge pumps (2) manual bilge pumps
- Emergency tiller

Entertainment

- Fusion marine stereo, Sirius XM capable, and wireless connect using Bluetooth
- Inside and outside speakers and additional forward cockpit speakers and amplifier
- Vizio flatscreen TV and Vizio sound bar (saloon)
- HDMI cable run from saloon TV to Nav station for computer/tablet interfacing
- Vizio flatscreen TV (master cabin)

Dinghy

- 2018 Highfield CL340BLA fiberglass RIB
- Yamaha 25HP four stroke outboard with external in-line fuel filter
- Full dinghy kit with: removable seats, lifting points, towing eyes, foot pump, oars, repair kit and 6.6gl fuel tank
- Mantus dinghy anchor with chain and rope rode
- Custom stainless steel davit harness

Partial Spares List

- (1) Starter motor (main engine)
- (1) Alternator (main engine)
- Fuel & oil filters (main motors & generator)
- Oil and lube for engines, genset and outboard
- Impellers and belts (main motors & generator)
- Zincs for props and saildrives
- Spare strainers for watermaker, generator, air conditioners, shower sumps
- Spare Sailing tackle: halyards, blocks, shackles
- Spectra Watermaker filters and extensive spares

Exclusions

Personal tools, hooka, fishing poles, charts

Additional Units Included

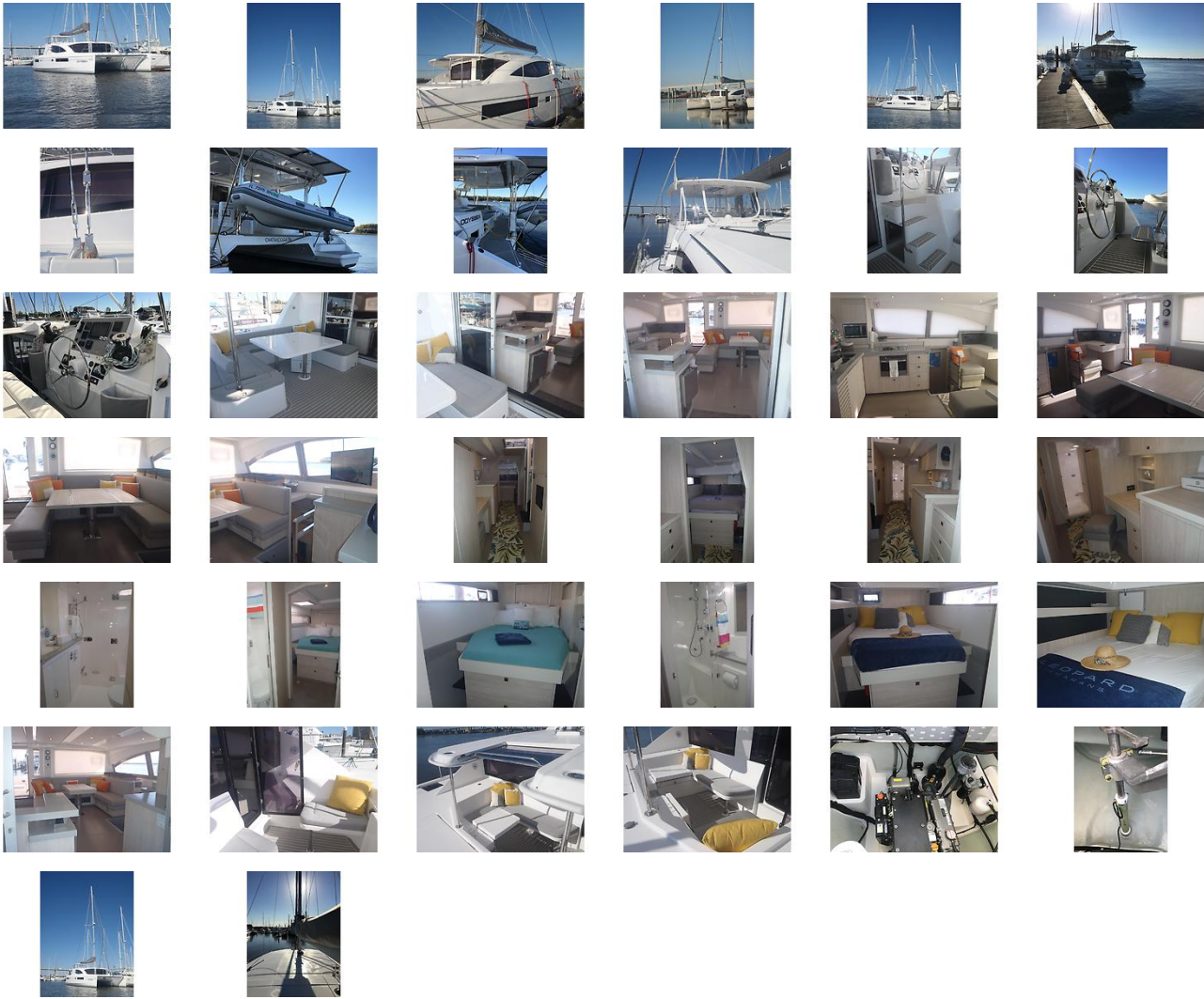
- 2018 Highfield CL340BLA

Disclaimer

The Company offers the details of this vessel in good faith but cannot guarantee or warrant the accuracy of this information nor warrant the condition of the vessel. A buyer should instruct his agents, or his surveyors, to investigate such details as the buyer desires validated. This vessel is offered subject to prior sale, price change, or withdrawal without notice.

Advanced co brokerage Florida Sail is pleased to assist you in the purchase of this vessel. This boat is centrally listed by Massey Yacht Sales & Service.

GALLERY



LOCATION MAP



EDWARDS YACHT SALES

Edwards Yacht Sales

510 Brookside Drive

Clearwater, FL, US

Office: 727.449.8222

Mobile: (727) 449.8222

sales@edwardsyachtsales.com