



## EDWARDS YACHT SALES

Edwards Yacht Sales

510 Brookside Drive

Clearwater, FL, US

Office: 727.449.8222

Mobile: (727) 449.8222

sales@edwardsyachtsales.com

# 1988 Lagoon Lagoon 55

Boat Type: Catamaran

Address: Ft Lauderdale, FL, US

Price: \$749,000



## OVERVIEW

Telestial Distraction is a 1988 Lagoon 55 sailing yacht, fully refit and restored to better-than-original beauty. This 4 Cabin, 4 Head Owner's version Cat is a must-see. She sailed 8 knots in 16 knots wind, upwind at an apparent wind angle of about 43 degrees, and the new genoa is awesome! New upgrades as of December 2015! Please see full description for details.

In the late 1980's, racing catamarans designers made the first cruising catamarans. Foremost among the designers are VPLP ( a French based naval architecture firm founded by Marc Van Peteghem and Vincent Lauriot-Prévost). Telestial Distraction is hull number one; the original "cruising cat", restored to better than new condition over the past several years.

Why an early model Lagoon's? The answer is simple: horsepower to weight. The ship is elegantly designed to provide spacious living, but it retains a racing-cat's "v-hull" shape and lightweight. Displacement is 13 tons versus modern 55 foot boats weighing in at around 17-19 tons. The difference is performance. Lively acceleration. Speed to safely to outrun weather and get to your destination. Excellent sailing qualities and easy shiphandling with small crew.

The ship's refit was thorough, repairing some items that had suffered the impacts of time and age, bringing them to better than new. The entire top deck, formerly cored in balsa is now cored in synthetic. New fiberglass decks vacuum laid for light weight and strength. All new wiring. All new plumbing. All new steering. All new batteries. New heads, sinks, toilets, ground

tackle, and more. Main engines were "zero-timed" at overhaul to manufacturer original specs, and freshly painted. All new interior cabinetry from "tri-cell" light weight plywood. Over a million-dollars in "new". NMEA2000 network backbone for maximum flexibility of monitoring and instrumentation.

The ship has special accents. A gorgeous galley. "Touch-plate" lighting controls back-lit with compass rose. Baby Ostrich (faux) headliner adds elegance. Dry Deck in wet-storage lockers to eliminate mold and mildew.

We welcome you to visit Telesial Distraction and see this beauty for yourself!

\*NEW = modifications and equipment added as of 2016

## SPECIFICATIONS

### Basic Information

Manufacturer:	Lagoon	Vessel Name:	TELESTIAL DISTRACTION
Model:	Lagoon 55	Boat Type:	Catamaran
Year:	1988	Hull Material:	Fiberglass
Category:	Sail	Hull Type:	
Condition:	Used	Hull Color:	
Location:	Ft Lauderdale, FL, US	Designer:	
Available for sale in U.S. waters:	Yes	Flag of Registry:	

### Dimensions & Weight

Length:	55 ft - 16.76 meter	Draft - max:	3 ft 11 in - 1.19 meter
LOA:	54 ft 9 in - 16.69 meter	Bridge Clearance:	75 ft - 22.86 meter
Beam:	30 ft 2 in - 9.2 meter	Dry Weight:	-

### Engine

Make:	Yanmar	Engine Type:	Inboard
Model:	4JHE	Drive Type:	
Engine(s):	2	Fuel Type:	Diesel
Hours:	70	Horsepower:	44 (Individual), 88 (combined)
Cruise Speed:	-	Max Speed:	-
Range:	-	Joystick Control:	No

### Tank Capacities

Fuel Tank:	-	Holding Tank:	-
Fresh Water Tank:	-		

### Accommodations

Total Cabins:	4	Crew Cabins:	1
Total Berths:	-	Crew Berths:	1
Total Sleeps:	-	Crew Sleeps:	1
Total Heads:	4	Crew Heads:	1
Captains Cabin:	No		

## DESCRIPTIONS

## Layout & Accommodations

The early model Lagoon 55's are characterized by spacious cockpits and salons, with easy access to the deck. The salon (6'3" high) has seating for 10. Four double cabins, two in each hull. One head per hull gives vastly more space on the ship. Crew cabin in port forepeak. Crew head starboard forepeak (shower and toilet).

### STARBOARD HULL:

Master suite aft: NEW woodwork and paneling.  
NEW Cedar-lined lockers.  
NEW En-suite sink.  
NEW Flagship Marine 9kBTU ac/heat.  
NEW high-density foam mattresses.  
NEW bedding

Head: New Raritan Marine Elegance self-macerating toilet. very efficient flush (0.6gal), rigged with fresh water no smell! (boat has NEW rebuilt water-maker)

Forward Double Cabin: NEW woodwork, headliner, and paneling.  
NEW Flagship Marine 9kBTU ac/heat.  
NEW high-density foam mattresses.  
NEW bedding

### PORT HULL:

Master suite aft: NEW woodwork and paneling.  
NEW Cedar-lined lockers.  
NEW En-suite sink.  
NEW Flagship Marine 9kBTU ac/heat.  
NEW high-density foam mattresses.  
NEW bedding

Port Midships storage and workbench: NEW lockers, wet-storage, drawers.

NEW butcher-block workbench

Head: New Raritan Marine Elegance self-macerating toilet. very efficient flush (0.6gal), rigged with fresh water no smell! (boat has NEW rebuilt water-maker)

Forward Double Cabin: NEW woodwork, headliner, and paneling.  
NEW Flagship Marine 9kBTU ac/heat.  
NEW high-density foam mattresses.  
NEW bedding

### SALON:

NEW woodwork throughout  
NEW headliner  
NEW ac/heat: two Flagship Marine 18kBTU units  
NEW cushions with HD foam, accent pillows  
NEW salon glass: ½ inch tempered glass with UV film  
NEW hatches with solar ventilation fans  
NEW LED lighting above and accent lighting under the bench  
NEW Fusion stereo and Cambridge Soundworks speakers, with aux inputs and iPod dock. The owner uses an LED projector for movies  
NEW hide-away chart table (flip up and down), lots of storage

## Deck & Equipment

### STEERING:

NEW Lecomble and Schmidt helm pumps and actuators.  
NEW high-pressure hydraulic lines, valves, and fittings  
NEW Jefa 1000mm stainless steel ship's wheels  
NEW tiller arms, pins and hardware  
NEW steering pedestals  
NEW rudder bearings  
NEW rudders: both rebuilt as part of the refit, with new internal structure and fiberglass  
New bottom paint after September haul out  
Two new kiwi props, plus 6 blades spare

A fresh bottom survey showed no issues

#### EMERGENCY STEERING:

NEW emergency steering tiller

#### PRIMARY ANCHOR:

NEWLY re galvanized 65lb CQR

NEW anchor bridle and Mantus chain-stopper hardware

NEW 250ft. chain

#### SECONDARY ANCHOR:

Aluminum Fortress FX-37

NEW 12 feet chain rode

NEW 250 feet 3/4 inch Nylon line

#### WINDLASS:

NEW Maxwell HWC1500 electric winch with NEW deck switches

#### WASHDOWN

NEW Jabsco saltwater washdown pump plumbed forward (anchor) and aft (transom) with quick-disconnect hoses

#### DECK HATCHES, DAVITS, CLEATS

NEW Lewmar hatches throughout the ship

NEW escape hatches

NEW sunscreens on interior hatches

NEW dinghy davits

NEWLY clear-anodized deck cleats

#### DINGHY

NEW West Marine 310 Hypalon Dinghy with New dinghy cover

USED Honda 10HP engine

#### DIVE COMPRESSOR

NEWLY overhauled Bauer dive compressor with four-tank manifold

### **Galley**

Galley midships.

NEW GN-Espace Ocean Chef Stove.

NEW GN Espace 4-burner cookware.

NEW GN-Espace sink that accepts cookware for ease of food preparation. NEW faucets.

NEW quartz countertops.

NEW Norcold 8 cu-ft refrigerator/freezer with NEW 6" foam insulation.

Fuel is propane, with NEW safety valves and control panel. Approved propane hose and copper.

### **Electronics & Navigations**

NEW Airmar PB150 ultrasonic wind instrument. No moving parts. It provides wind speed and direction, barometric pressure, integrated GPS. NMEA 2000

NEW Maretron DS150 NMEA 2000 multi-function displays (two onboard)

NEW Raymarine i70 MFD at the helm

NEW Raymarine p70 autopilot at the helm

NEW Raymarine SPX SmartPilot autopilot with NEW fluxgate, NEW linear drive, and NEW p79 depth sounder (port side).

NEW Garmin VHF300 AIS VHF transceiver. Two handsets (salon and helm)

NMEA2000 backbone throughout the ship to accept any new compliant instrument, wifi interface, chartplotter, and more.

Taffrail Log

### **Electrical, Power & Plumbing**

#### DC - SYSTEM:

NEW House Batteries: 8 x Odyssey PC2250 batteries (126 A-H each). Located in-salon amidships.  
NEW diesel start batteries: Odyssey PC2250, located under each aft bunk  
NEW generator start: one Odyssey PC680 located salon, port side outboard.  
NEW battery isolation switches and ACR undervolt isolation.  
NEW Paneltronics DC distribution system with new breakers  
NEW wiring throughout the boat (100% new)  
NEW alternators and voltage regulators for both engines  
NEW MagnaSine 2000W inverter charger and control panel  
NEW DC refrigeration: Norcold refrigerator  
NEW DC water pump: Headhunter Mach 5 (nearly silent)

#### AC - SYSTEM:

NEW Paneltronics distribution panel with 110/220V sections  
NEW galvanic isolator  
Generator: not rebuilt during the refit. NEW wiring harness and sensors, seals.  
NEW Shore power connections: 220v / 50A  
NEW Air Conditioning & cabin heaters: Salon: two Flagship Marine 18kBTU units, four Flagship Marine 9kBTU ac/heat (one each cabin)

#### PLUMBING:

NEW hoses and fittings throughout (100% new PEX)  
6 Gallon hot water tank with a NEW heating element, NEW hot water TCV. The tank also plumbed to the port engine.  
Two 70 gallon water tanks reconditioned at overhaul (opened, cleaned, external paint).

#### BILGE PUMPS

NEW Rule 1500 in each midship (2)  
NEW Rule 800 electric pumps (engine room and forward compts) (4)  
Manual Pumps: 2 x Whale (suction to a low point in the mid bilge. Located in the cockpit)

#### BILGE ALARM AND MONITORING

NEW transom showers, NEW showers in heads, NEW shower in crew head  
NEW shower sumps and pumps (Rule)  
WATER MAKER: NEWLY overhauled Village Marine 600 gallons per day watermaker (25 gals/hr). NEW filters. Located starboard forepeak.  
NEW port and starboard macerator pumps and wastewater plumbing system (heads also have built-in macerators)  
NEW freshwater and wastewater deck fill

### Engine and Mechanical Equipment

#### ENGINES:

Yanmar 4JHE port and starboard (44HP rated at 3600 rpm). Propels ship at 8-9kts.  
NEWLY overhauled at refit. Approx 70 hours per engine. All new pistons, liners, injectors, bearings, seals, bolts.  
NEW KBW-20 transmissions  
NEW high torque starters on diesel  
NEWLY rebuilt Walter V-drives  
NEW prop shafts custom manufactured. NEW PSS seals  
REBUILT three blade MaxProp propellers  
Wet exhaust overboard with NEW water lift mufflers  
NEW 160A alternators  
NEW voltage regulators  
NEW Griffin Fuel filters (accept Raycor 500 filter elements)  
NEW Chetco digital engine monitoring on LCD screen at helm  
NEW independent alarm system for oil pressure and water temperature  
NEW Glendinning engine controls. Control engines from either helm station

### Sails & Rigging

RIGGING: Sloop rigged / fractional rig with flying inner forestay.  
MAST: Two sets of raked spreaders, deck stepped. Newly overhauled and painted  
STANDING RIGGING: NEW 1 x 19 stainless steel wire and fittings

RUNNING RIGGING: NEW lines throughout the ship, Sta-Set and Endura braid. NEW Harkin foot blocks, NEW Harkin stand-up blocks

NEW Spinlock clutches on mast and deck

WINCHES (all NEW):

Mainsheet winch: Lewmar EVO 65ST Alloy Black

Jib sheet winches: (2) Lewmar EVO 65ST Alloy Black

Traveler winch Lewmar EVO 65ST Alloy Black

Main halyard winch: Lewmar EVO 50ST Alloy Black

Mast utility winches on the mast: (2) Lewmar EVO 50ST Alloy Black

FURLING GEAR: REBUILT Profurl drum and foil on the forestay with a self-tacking jib.

CHAIN PLATES: NEW Stainless steel plates, through-bolted to the hull inside galley and port midships. NEW through bolts

SAILS

NEW Fully-battened Mainsail (Rolly Tasker) with three reef points

Ronstan (Frederickson) luff slides. NEW bearings

NEW Furling jib (Rolly Tasker) on NEWLY overhauled Profurl Furler

Storm Jib.

BIMINI: Full cockpit bimini with an alloy frame with NEW stamoid canvas. NEW Powder coating.

SAIL COVERS: NEW

### **Other Features/Equipment**

PERSONAL FLOTATION DEVICES: Lifejackets on board

THROWABLE DEVICES: 2 Life Rings and throw rope

NAVIGATIONAL LIGHTING: NEW OGM LED lighting: anchor, steaming, port and starboard colored, stern

DECK LIGHTS: NEW LED spreaders lights

LIFELINES: NEW Stainless steel wire with studs and turnbuckles. NEW stainless steel stanchions.

TOE RAIL: NEW Goiot

FIRE EXTINGUISHING SYSTEMS: Fire extinguishers on board. Engine rooms have fire-port (insert extinguisher nozzle without opening hatch)

CANVASS WORK: Textilene covers for salon windows

MISC EQUIPMENT: propane grill, fully furnished galley (dishes, towels, knives, etc)

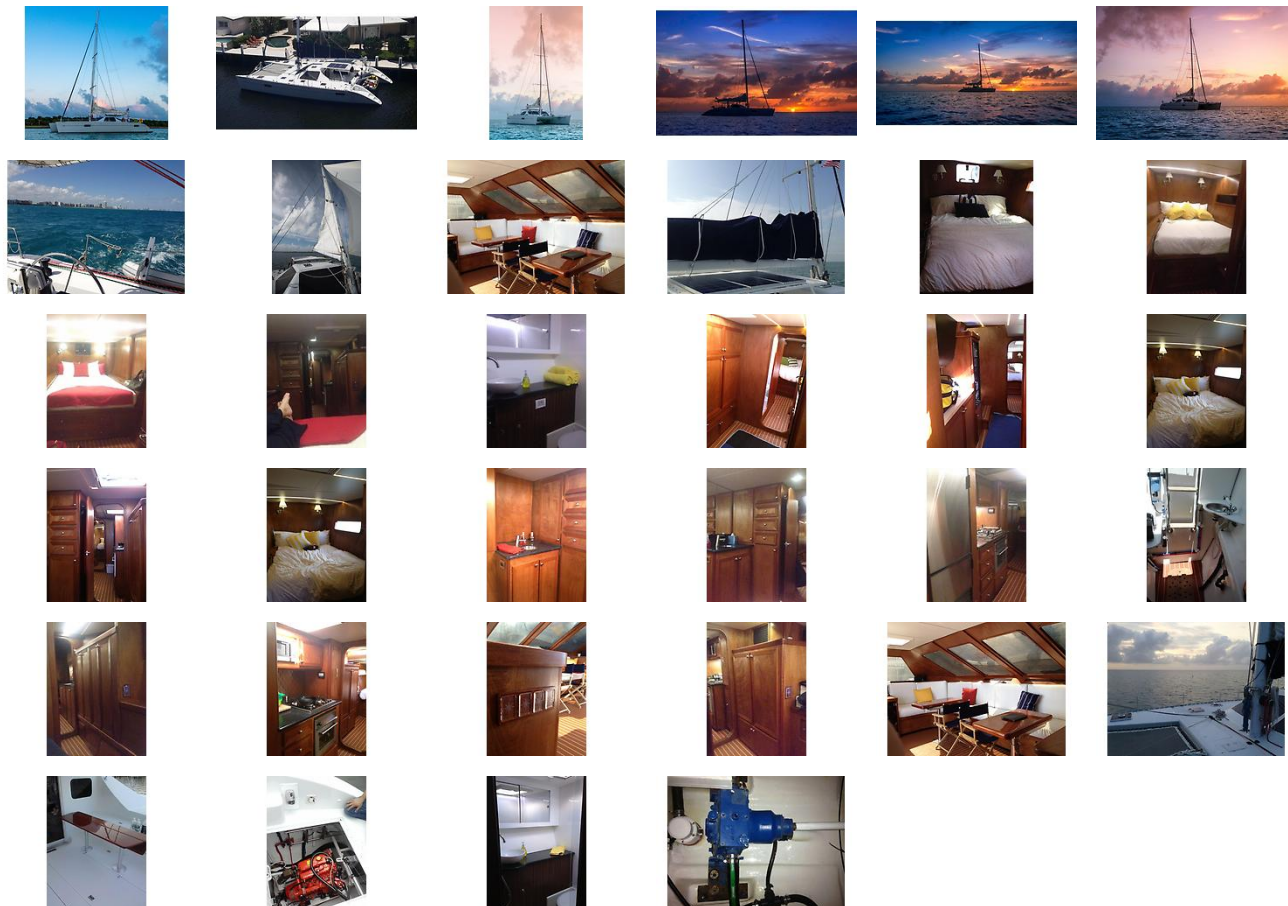
EXCLUSIONS: Personal Effects, navigation, and piloting tools

### **Disclaimer**

The Company offers the details of this vessel in good faith but cannot guarantee or warrant the accuracy of this information nor warrant the condition of the vessel. A buyer should instruct his agents, or his surveyors, to investigate such details as the buyer desires validated. This vessel is offered subject to prior sale, price change, or withdrawal without notice.

Advanced co brokerage Florida Sail is pleased to assist you in the purchase of this vessel. This boat is centrally listed by The Catamaran Company.

## GALLERY



## LOCATION MAP



## EDWARDS YACHT SALES

Edwards Yacht Sales

510 Brookside Drive

Clearwater, FL, US

Office: 727.449.8222

Mobile: (727) 449.8222

sales@edwardsyachtsales.com