



LEO THIBAULT
Edwards Yacht Sales
127 E Charlotte Ave
Punta Gorda, FL, US
Office: 727.449.8222
Mobile: 941.504.6754
Leo@EdwardsYachtSales.com



1990 PDQ Yachts Fantastic Condition

Boat Type: Catamaran

Address: Fort Myers, FL, US

Price: \$114,900



OVERVIEW

This PDQ has it all!! From fresh professionally painted decks and interior, to great conditioned sails and rigging, Catatude has it all!!

Solar Panel!! Wind Generator!! Windless!! Dinghy and Davits!! Reverse A/C and MORE.

Click on Full Specs to see all this great boat has to offer

Don't Miss out!!! Call TODAY!!!!!!

SPECIFICATIONS

Basic Information

Manufacturer:	PDQ Yachts	Vessel Name:	Catatude
Model:	Fantastic Condition	Boat Type:	Catamaran
Year:	1990	Hull Material:	Fiberglass
Category:	Sail	Hull Type:	
Condition:	Used	Hull Color:	
Location:	Fort Myers, FL, US	Designer:	
Available for sale in U.S. waters:	Yes	Flag of Registry:	

Dimensions & Weight

Length:	34 ft - 10.36 meter	Draft - max:	-
LOA:	36 ft 5 in - 11.1 meter	Bridge Clearance:	-
Beam:	18 ft - 5.49 meter	Dry Weight:	-

Engine

Make:	Yamaha	Engine Type:	
Model:	99 - 4-Stroke	Drive Type:	
Engine(s):	2	Fuel Type:	Gas/Petrol
Hours:	-	Horsepower:	-
Cruise Speed:	-	Max Speed:	-
Range:	-	Joystick Control:	No

Tank Capacities

Fuel Tank:	30 gallons - 1 tank(s)	Holding Tank:	35 gallons - 1 tank(s)
Fresh Water Tank:	80 gallons - 1 tank(s)		

Accommodations

Total Cabins:	3	Crew Cabins:	1
Total Berths:	-	Crew Berths:	1
Total Sleeps:	1	Crew Sleeps:	1
Total Heads:	1	Crew Heads:	1
Captains Cabin:	No		

DESCRIPTIONS

Accommodations

Climb aboard Catatude and you will be instantly impressed by the love and care she has seen through out the years. Beautiful Shine, Great equipment, Topsides have a fresh beautiful paint shine and new non-skid. The fresh paint inside make the boat look "like new";

Live your Dreams!!!

Walkthrough

Entering salon area thru slightly off-center door from cockpit, and crossing over the athwartship companionway that leads to either hull, it's a step up to the u-shaped settee seating eight (!) surrounding a folding-leaf table, with great lighting and views thru four eye-level portlights thru the trunk-cabin, four more portlights thru the hullsides, and two overhead opening hatches. Warm wood tones through-out, with just re-finished teak & holly cabin sole, teak table, teak trim around light oak bulkheads. Sound-absorbing padded vinyl headliners. Conveniently located grab-bars ensure there's always a hand-hold available to traverse these wide-open interior spaces safely.

Down two steps to port, the Spotless galley is on both sides of a long aisle: against the outer hullside is the two-burner Force-10 propane stove with oven adjacent to a nearly six-foot-long counter. Across from this is a fashionable double-round sink with pressure h&c faucet, additional foot-operated fresh water spigot, and a flat-shelf refrigerator with remarkable interior volume (extends nearly three feet in toward centerline at hand-level) culminating at small freezer compartment. Lots of cabinetry and pivot-out bins under sink, under refrigerator and across the aisle all along under the long cutting-board counter.

Aft of the galley, thru an oval door (all the interior doors close tightly into rounded-corner aluminum frames) is the smallest stateroom, single-berth to one side with aisle aft to two deep lockers below the opening hatch to aft deck, there's also an opening porthole to the side. This stateroom is currently set up as a storage-room, since there are TWO other staterooms aboard! As in the other staterooms, hullsides are carpeted to avoid condensation.

Going forward from the galley thru another oval door, there's the first of two identical staterooms occupying the forward end of each hull. Both staterooms have full queen-sized berths atop the bridge deck between hulls, full standing headroom in the aisle alongside the berths leading to a small dressing seat, beyond that are deep double-door lockers (full-length hanging locker thru one door, with a deep bin below the hanging clothes, reaching deep into the hull -- shelves thru the other door) -- above the lockers is a shelf with fiddle-rim. Aft at the head of berth is all-wood bulkhead; elegant grey textured carpeting against hullsides, above that is padded vinyl headliner on cabin sides and overhead. Along both sides of the stateroom aisle are teak-rimmed cubbyholes for miscellaneous storage. Each stateroom has two opening hatches to deck, as well as an opening porthole, for excellent ventilation and lighting. (Full snap-in screening for all hatches and portholes)

Coming back aft thru the galley and crossing to starboard over the salon, down two steps into the opposite hull, there's a large navigation station featuring full-length settee against outside hull, which is convenient seating for the fold-down nav table approx 4 feet wide, 3 feet deep, below the electrical panel abutting the dinette settee back. Another deep locker just forward of the nav-table.

Forward of the nav-center, thru another oval door, is the second double-berth stateroom, identical to the stateroom in the opposite hull.

Going aft of the nav-center thru another oval door is the head, with all surfaces made of one-piece molded fiberglass. Wet-locker for foul-weather gear, draining to the bilge, is directly at entry. Pressure h&c water at sink aft, which is also a wand-type shower (sump below teak grating in the floor). Par manual toilet, opening hatch to aft deck as well as opening porthole. Deep medicine chest above sink, cabinetry under sink. Going outside to Cockpit, you'll find molded-in nonskid on fiberglass cockpit floor, with DriDek grating; pivoting helm seat is on raised portion one foot higher than cockpit. Additional removable co-pilot's seat mounts over raised portion against opposite cockpit-side. Wheel steering installed against aft end of cabin; full navigation instrumentation mounts at this helm-station. All sail control lines are led to cockpit. Easy to come on-board via molded-in stairwells inside each sugar-scoop transom. Full sstl safety railing around aft end of cockpit. Integral pivoting davits bring dinghy up between hulls, dinghy does not add to length of boat!

- Headroom: 6'3"; in salon area, 6'3";6"34; to 8'3"; in galley and nav-station, 6'3";6"34; in staterooms and head

Accommodations

Sleeps five in three separate staterooms, plus one on dinette (without collapsing table!), one on nav-center settee, for total of seven berths.

Electronics

Ready to safely push off to all your dream destinations!!!

- Freedom Marine 2000 watt inverter w/remote control panel
- Raytheon AutoHelm 4000 plus
- AutoHelm tri-data wind/depth/speed instruments
- Raymarine VHF radio

- Uniden hand held VHF
- Pioneer radio/CD player with cabin & cockpit speakers
- Ritchie Helmsman Compass
- Garmin GPS chart plotter

Mechanical and Electrical

This great Cat has it all!!!!

- Evergreen 210 W solar panel (2009)
- AirX Marine 400W wind generator
- 4 Trojan T105 marine batteries
- Force 10 stainless steel propane stove & oven
- Nova Kool 12 V fridge (2009)
- Electric hot water heater
- Marine Air Central A/C 16,000 BTU
- 3 aluminum propane tanks in separate & vented locker w/new valves (recertified in 2009)
- 50 gallon water tank
- 35 gallon aluminum gas tank, custom made in 2000
- Twin Yamaha 9.9 HP 4-stroke motors (2001 and 2003)
- 50' shore power cord
- Electrical & manual water pumps

Deck and Hulls

Great Shine!! Fresh Sails!! Wonderful Equipment!!! WHAT ARE YOU WAITNG FOR!!

- Topsides & interior professionally painted (2011)
- Non skid on topsides professionally resurfaced (2011)
- Large cockpit
- Full bimini top w/window & custom side curtains
- Bimini cover & sun shades (2011)
- 35 lb Delta anchor stbd side w/120' chain & 150' rode
- Maxwell Freedom 800 windlass w/remote (2009)
- 27 lb Danforth anchor w/40' chain & 150' rode
- Johnson anchor wash down system
- Sea anchor w/300' chain/rope rode
- Todd captains chair at helm station
- Adjustable mates chair on port side
- 16 Lewmar opening hatches & screens w/custom hatch covers
- Stainless steel dingy davits
- Inflatable Boat US 9' ridged bottom dingy w/cover & Yamaha 8HP motor & 10 lb dingy anchor w/rode
- New bottom paint (2011)
- Bow pulpits & stern rails w/double life lines
- Horseshoe buoy w/man overboard pole
- Transom swim ladder
- Fenders & dock lines
- Coast Guard safety equipment

Sails and Rigging

You won't find anything nicer!!!

- Hood Vektron full battened mainsail w/ 2 rows of reefing & Cunningham cringle (2009)
- Tides Mainsail Track & Cars (2011)
- Harken lazy jacks
- Triton 150% genoa w/ Harken roller furling, like new
- Spare Hood mainsail w/ 2 rows reefing & new headboard

- 2 Lewmar 46 self tailing sheet winches
- 1 Lewmar 30 self tailing sheet winch
- Single line reefing line rope clutches
- Port & stbd line clutches (all lines lead to cockpit)
- All standing rigging replaced in 2000
- Cruising spinnaker w/ ATN spinnaker sleeve
- Mast removed, inspected, rewired w/new coax VHF antenna, lighting & shives (2007)
- Bosun's chair

Brokers Comments

This PDQ has it all!! From fresh professionally painted decks and interior, to great conditioned sails and rigging, Catatude has it all!!

Solar Panel! Wind Generator!! Windless!! Dinghy and Davits!! Reverse A/C and MORE.

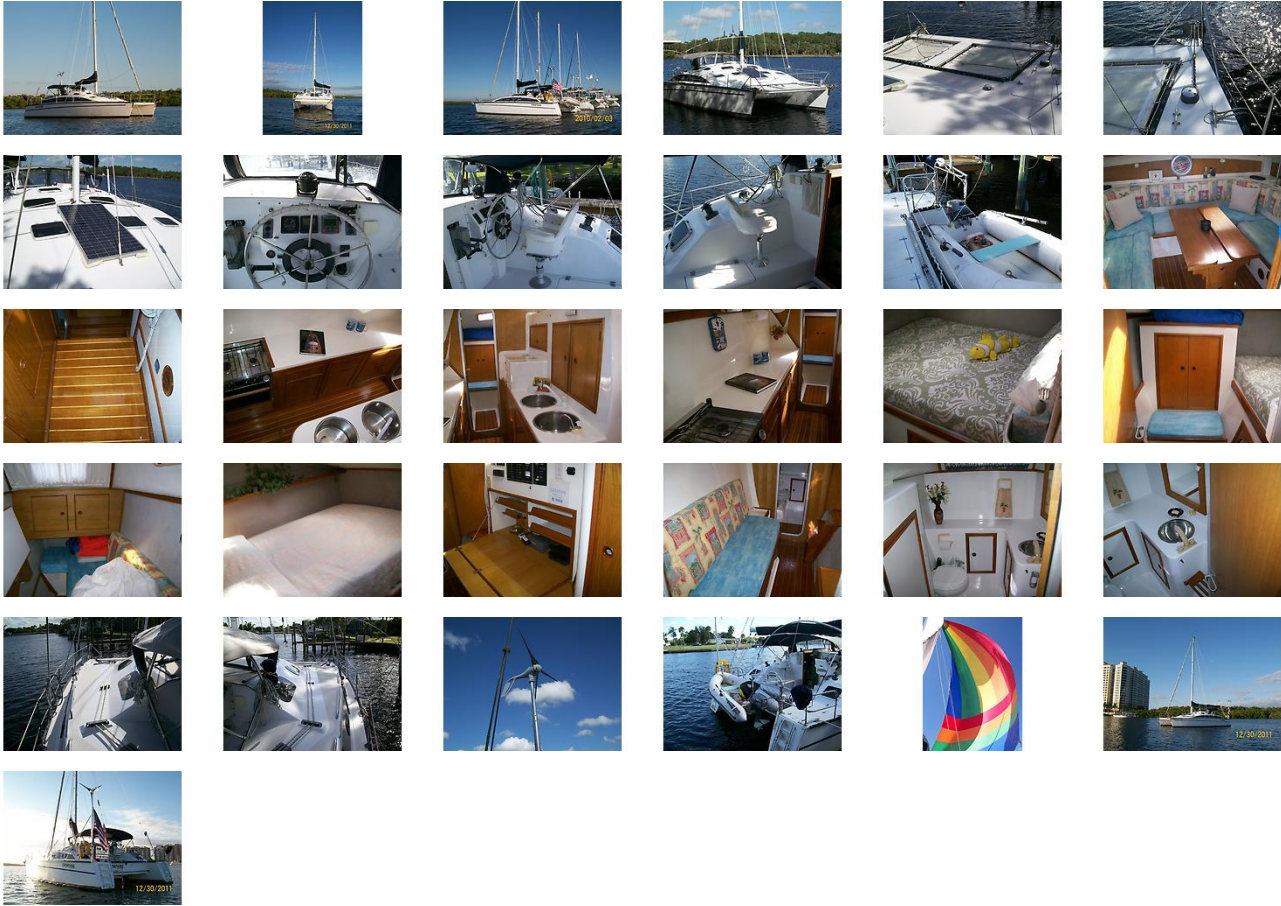
Click on Full Specs to see all this great boat has to offer

Don't Miss out!!! Call TODAY!!!!!!

Disclaimer

The Company offers the details of this vessel in good faith but cannot guarantee or warrant the accuracy of this information nor warrant the condition of the vessel. A buyer should instruct his agents, or his surveyors, to investigate such details as the buyer desires validated. This vessel is offered subject to prior sale, price change, or withdrawal without notice.

GALLERY



LOCATION MAP



LEO THIBAUT
 Edwards Yacht Sales
 127 E Charlotte Ave
 Punta Gorda, FL, US
 Office: 727.449.8222
 Mobile: 941.504.6754
 Leo@EdwardsYachtSales.com

