



**LEO THIBAUT**  
Edwards Yacht Sales  
127 E Charlotte Ave  
Punta Gorda, FL, US  
Office: 727.449.8222  
Mobile: 941.504.6754  
Leo@EdwardsYachtSales.com



# 1989 Carver 32 Mariner

Boat Type: Motor Yacht

Address: Punta Gorda, FL, US

Price: \$19,999



## OVERVIEW

- \* WOW!! What a Great Boat at a Great Price!
- \* 350hp Crusaders installed February 2000 with aprox 600 hrs.. Receipt on Board.
- \* Bottom Stripped of all accumulated paint and fresh bottom paint added August 2015
- \* Buff and Wax August 2015
- \* Raymarine C 80 Color GPS Plotter
- \* Are you ready to go Boating&#63;

## SPECIFICATIONS

### Basic Information

Manufacturer:	Carver	Vessel Name:	Rockin Robin
Model:	32 Mariner	Boat Type:	Motor Yacht
Year:	1989	Hull Material:	Fiberglass
Category:	Power	Hull Type:	
Condition:	Used	Hull Color:	
Location:	Punta Gorda, FL, US	Designer:	
Available for sale in U.S. waters:	Yes	Flag of Registry:	

### Dimensions & Weight

Length:	32 ft - 9.75 meter	Draft - max:	2 ft 10 in - 0.86 meter
LOA:	36 ft - 10.97 meter	Bridge Clearance:	11 ft 6 in - 3.51 meter
Beam:	11 ft 7 in - 3.53 meter	Dry Weight:	12600 ft - 3840.48 meter

### Engine

Make:	Crusader	Engine Type:	Inboard
Model:	350	Drive Type:	
Engine(s):	2	Fuel Type:	Gas/Petrol
Hours:	600	Horsepower:	266 (Individual), 532 (combined)
Cruise Speed:	-	Max Speed:	-
Range:	-	Joystick Control:	No

### Tank Capacities

Fuel Tank:	220 gallons - 1 tank(s)	Holding Tank:	20 gallons - 1 tank(s)
Fresh Water Tank:	84 gallons - 1 tank(s)		

### Accommodations

Total Cabins:	1	Crew Cabins:	1
Total Berths:	1	Crew Berths:	1
Total Sleeps:	1	Crew Sleeps:	1
Total Heads:	1	Crew Heads:	1
Captains Cabin:	No		

## DESCRIPTIONS

### Manufacturer Provided Description

The perfect blend of fishing and comfortable family cruising can be enjoyed aboard the Carver 32 Mariner Convertible. If fishing is the plan, the 32 offers 60 square feet of self-bailing cockpit with lots of room for fishing gear and a convenient transom door for boarding. Its command bridge includes a control console with full instrumentation and comfortable seating for five. Roomy master stateroom and a convertible dinette - lounge provide sleeping for six. The salon features a wetbar with bottle and glass storage. The head compartment with fiberglass shower stall; the fully equipped galley with large 110 Volt refrigerator - freezer, and three-burner stove with oven, make cruising even more convenient.

## Vessel Walk Through

Enter from the spacious cockpit through the sliding door and down 2 steps to the salon with a dinette to port and a starboard settee. Forward to starboard is an icemaker and wet bar with liquor cabinet and a ladder accessing the fly bridge from the salon. Forward to port is the galley with double stainless steel sinks. Opposite to starboard is the refrigerator/freezer. Forward to starboard is the head with separate stall shower. The master stateroom is forward with an offset double berth.

Very popular model built for 11 years. Has great appeal as a family cruiser.

## Accommodations

Extra-large, 55 sq. ft cockpit is ideal for fishing, water sports or relaxing. Full transom door provides easy access to the fiberglass swim platform. From the cockpit, climb up either the port or starboard side to the spacious flybridge which includes generous seating for nine and control console with pedestal slide/ swivel pilot seat. When you move forward on the wide port or starboard walkways, you will find fully welded stainless-steel bow and safety rails. Once forward to the bow, relax on the large foredeck sun lounge which features thick padding for greater comfort. When you step from the cockpit down to the salon you will notice the open concept styling which creates a spacious, party-size salon with seating for eight. On the starboard side there's a convenient wet bar with bottle storage, direct ladder-access to the bridge and a couch that converts to a bunk for your extra guests. On the port side you will find the large dinette with easy seating for four adults and also drops for additional sleeping area. Walk forward to the port side galley and starboard side head. The head area has a vanity with a stainless steel sink, manual head and shower enclosure. The forward stateroom features a large double berth with extra foam mattress and convenient private access to the head compartment. Also, the forward stateroom has hanging lockers, cupboards and drawers for personal gear.

## Galley

The very clean galley is forward to port. It features every thing needed to make the chef happy.

3 Burner Electric Stove top

Microwave Oven

Double Sink

110 Volt Magic Chef Refrigerator/Freezer

Pressure Water

Ample counter top and storage space

## Machinery

- Twin 350cid Crusaders Installed new in 2000 aprox 600 hrs
- 266 HP
- 588 hours
- 5 KW Westerbeke Generator ( NOT WORKING)
- Engines are raw water cooled
- V drives transmissions
- Fireboy fire protection system
- Three automatic bilge pumps
- Engine room blower
- Engine synchronizer
- Engine alarms
- Engine room sniffer

## **Electronics and Navigation**

- Ritchie compass
- Raymarine C80 Color GPS Chart Plotter With All Florida Chip
- VHF
- Standard depth finder
- AM/FM with cassette

## **Electrical**

- 50' 30 amp power cords
- Two 12 volt deep cycle marine batteries
- Pro Marine 30 Amp battery charger
- Air Conditioning

## **Hull and Deck**

- Bow pulpit
- Danforth anchor
- Anchor line
- Bow and side rails
- Bimini top
- Bimini over Cockpit
- Trim tabs
- Windshield wipers
- Remote spotlight
- Swim deck
- Swim ladder
- Transom door
- Transom shower
- New bottom paint August 2015
- Cabin carpeting
- Cockpit carpeting
- All manuals, fenders and lines

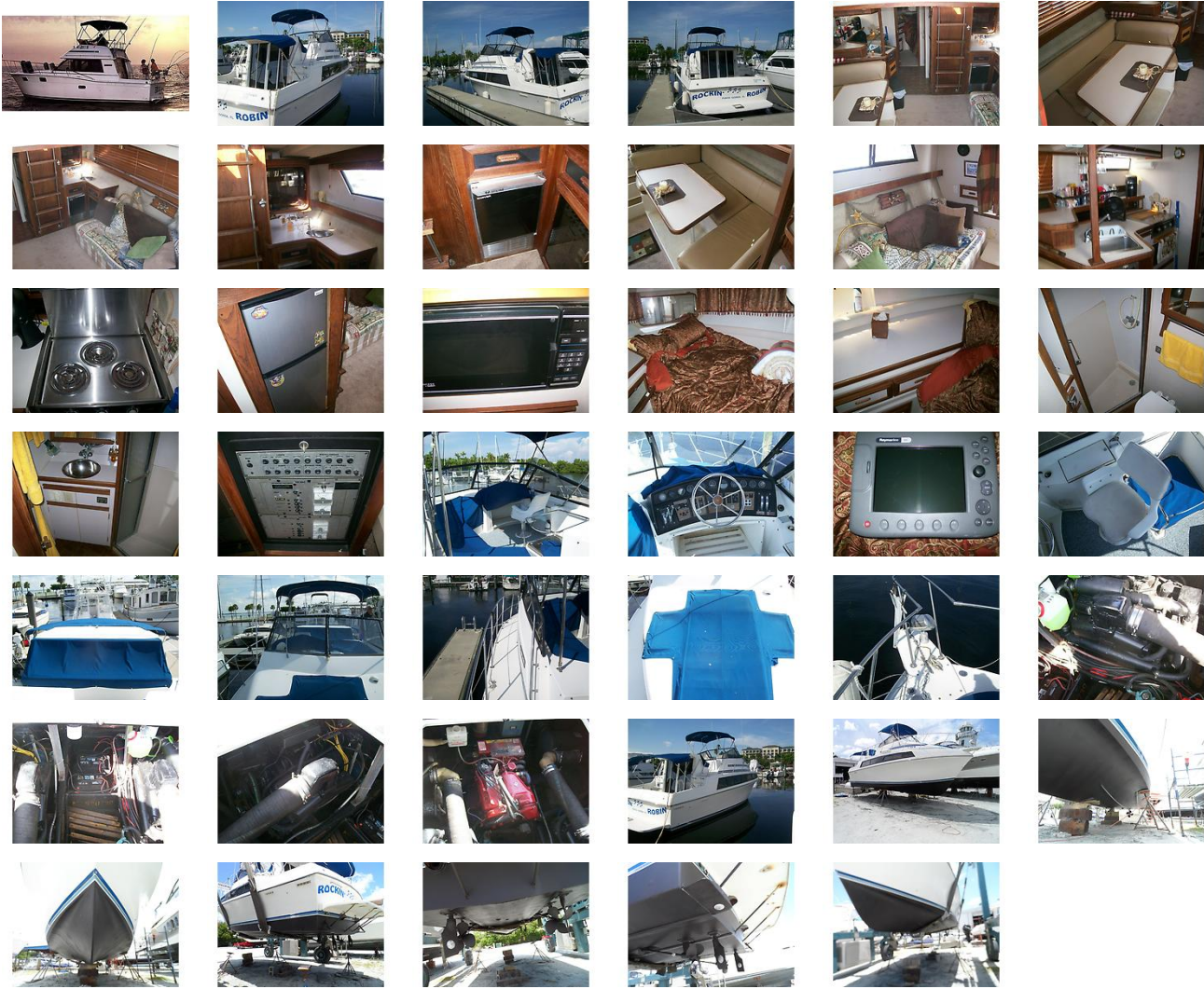
## **Brokers Comments**

- \* WOW!! What a Great Boat at a Great Price!
- \* 350hp Crusaders installed February 2000 with aprox 600 hrs.. Receipt on Board.
- \* Bottom Stripped of all accumulated paint and fresh bottom paint added August 2015
- \* Buff and Wax August 2015
- \* Raymarine C 80 Color GPS Plotter
- \* Are you ready to go Boating?;

## **Disclaimer**

The Company offers the details of this vessel in good faith but cannot guarantee or warrant the accuracy of this information nor warrant the condition of the vessel. A buyer should instruct his agents, or his surveyors, to investigate such details as the buyer desires validated. This vessel is offered subject to prior sale, price change, or withdrawal without notice.

# GALLERY



# LOCATION MAP



**LEO THIBAUT**  
 Edwards Yacht Sales  
 127 E Charlotte Ave  
 Punta Gorda, FL, US  
 Office: 727.449.8222  
 Mobile: 941.504.6754  
 Leo@EdwardsYachtSales.com

