



TOM MORTON
Edwards Yacht Sales
4 Cathedral Place
St. Augustine, FL, US
Office: 727.449.8222
Mobile: 904.377.9446
Tom@EdwardsYachtSales.com



1996 Privilege 37 Owners Version

Boat Type: Multi Hull

Address: St Augustine, FL, US

Price: \$149,000



OVERVIEW

Don't miss this opportunity to own a rock solid, sail anywhere bluewater cruising cat in an easily handled size, and for an amazing price!

This owner version Privilege 37 is the jewel of sub 40 foot bluewater cats. It is incredibly spacious, and features a unique forward nacelle king sized berth. Port forward is a generous head, and starboard forward is a stand up shower and head compartment. There is a down galley, ample storage space, and two guest cabins aft. The salon is open and airy, with plenty of room for lounging, and is highlighted with light high varnished woods. There is a large aft cockpit with plenty of room for entertaining a crowd.

This is a true **bluewater cruising cat, built by the respected French company that started the catamaran revolution, priced to compete with the typical lightly built *coastal* cruising cats in this size range.**

Martelle shows like a much newer and larger cat than you would expect from her LOA and

age. The quality and seaworthiness of the Privilege cats is undeniable. [Two boat owner wants her sold and has priced her accordingly.](#) Here is an opportunity to start your cruising NOW.

SPECIFICATIONS

Basic Information

Manufacturer:	Privilege	Vessel Name:	Martelle
Model:	37 Owners Version	Boat Type:	Multi Hull
Year:	1996	Hull Material:	Fiberglass
Category:	Sail	Hull Type:	
Condition:	Used	Hull Color:	
Location:	St Augustine, FL, US	Designer:	
Available for sale in U.S. waters:	Yes	Flag of Registry:	

Dimensions & Weight

Length:	37 ft - 11.28 meter	Draft - max:	4 ft - 1.22 meter
LOA:	37 ft - 11.28 meter	Bridge Clearance:	-
Beam:	21 ft 8 in - 6.61 meter	Dry Weight:	-

Engine

Make:	Yanmar	Engine Type:	Inboard
Model:	3GM30	Drive Type:	
Engine(s):	2	Fuel Type:	Diesel
Hours:	3500	Horsepower:	30 (Individual), 60 (combined)
Cruise Speed:	-	Max Speed:	-
Range:	-	Joystick Control:	No

Tank Capacities

Fuel Tank:	150 gallons - 2 tank(s)	Holding Tank:	-
Fresh Water Tank:	350 gallons - 1 tank(s)		

Accommodations

Total Cabins:	3	Crew Cabins:	1
Total Berths:	3	Crew Berths:	1
Total Sleeps:	1	Crew Sleeps:	1
Total Heads:	2	Crew Heads:	1
Captains Cabin:	No		

DESCRIPTIONS

Layout, Equipment, and Specifications

Interior Layout and Amenities

The Privilege 37 feature the largest master berth you will find in a catamaran this size. The well thought out layout sets up

perfectly for two couple as each can have separate head/showers ensuite with the staterooms. The salon offers an incredible amount of space for dining and lounging, as well as panoramic views

- Navigation table with space for both a laptop and paper navigation charts
- Master nacelle cabin with oversize size queen berth and excellent central ventilation
- 2 Guest cabins aft in each hull with queen size berths. The port aft cabin is currently set up a storage/workshop, but can easily be converted back to stateroom.
- Multiple storage lockers located midship in the starboard hull
- Salon window protection covers and shades
- Wet locker in Salon
- Six 12 volt Caframo fans
- Wabasto diesel heating throughout

Galley

- Located midships in the port hull and open to the salon.
- Custom stainless countertop on port side
- Front loading refrigeration
- Front loading freezer
- Large pantry in the port hull
- Large storage cabinets in galley
- Origo dual alcohol/electric stove with two burners
- Large stainless steel sink with hot and cold water mixer

Heads

- Full head with walk-in separate shower stall in the starboard hull
- Large full head in the owner port hull
- Both heads are fit with easy to use composting toilets. No pumpouts, holding tanks, or clogged and stinky waste lines **EVER!**
- Stainless steel 12 Gallon water heater

On Deck

- Stainless steel bimini with central walkover
- Double helm chair with foot rest in front of the stainless steel steering wheel
- Cocktail/dinner teak table in cockpit
- Four cockpit lockers
- Very large deck access bow lockers in each hull
- Two forepeak seats
- Lewmar windlass
- Bruce anchor w/ 200 feet of chain rode
- Danforth secondary anchor
- Dock lines and fenders
- Swim ladder with fresh water shower on stbd transom
- Stainless steel dinghy davits with solar panel mount

Sails and Rig

- Calvert Main with 2 single line reefs
- Stackpack and lazyjacks
- Calvert Genoa w/ profurl furler
- Staysail/Stormsail
- Sails in excellent condition
- 3 Lewmar 44 ST winches in cockpit
- Lewmar 44 and 40 st winches on mast
- Lewmar tracks and sheet cars
- Lewmar mainsheet traveler system

Electronics

- Raymarine 7000+ Pilot
- Raymarine ST60 Wind
- Raymarine ST60 Speed/Depth/Log/Sea Temp
- Garmin 2010c Chartplotter

- Anchor alarm alert in forward cabin
- Plastimo compass
- Polaroid TV in Master stateroom
- Icom 710 SSB
- Alpine FM/AM/CD/ player with salon and cockpit speakers

Mechanical and Electrical

- Yanmar 3 gm diesels, **new sail drives in 2012**
- Oversize 125a Promax alternators on each engine for battery charging, plus spare alternator
- Xantrex 1500w inverter
- Link 1000 battery monitor
- Odyssey 2x500ah battery bank- **new 2014**
- 30a AC shore power system
- Galvanic isolator
- New rudder bearing **2015**
- Generous spare parts inventory

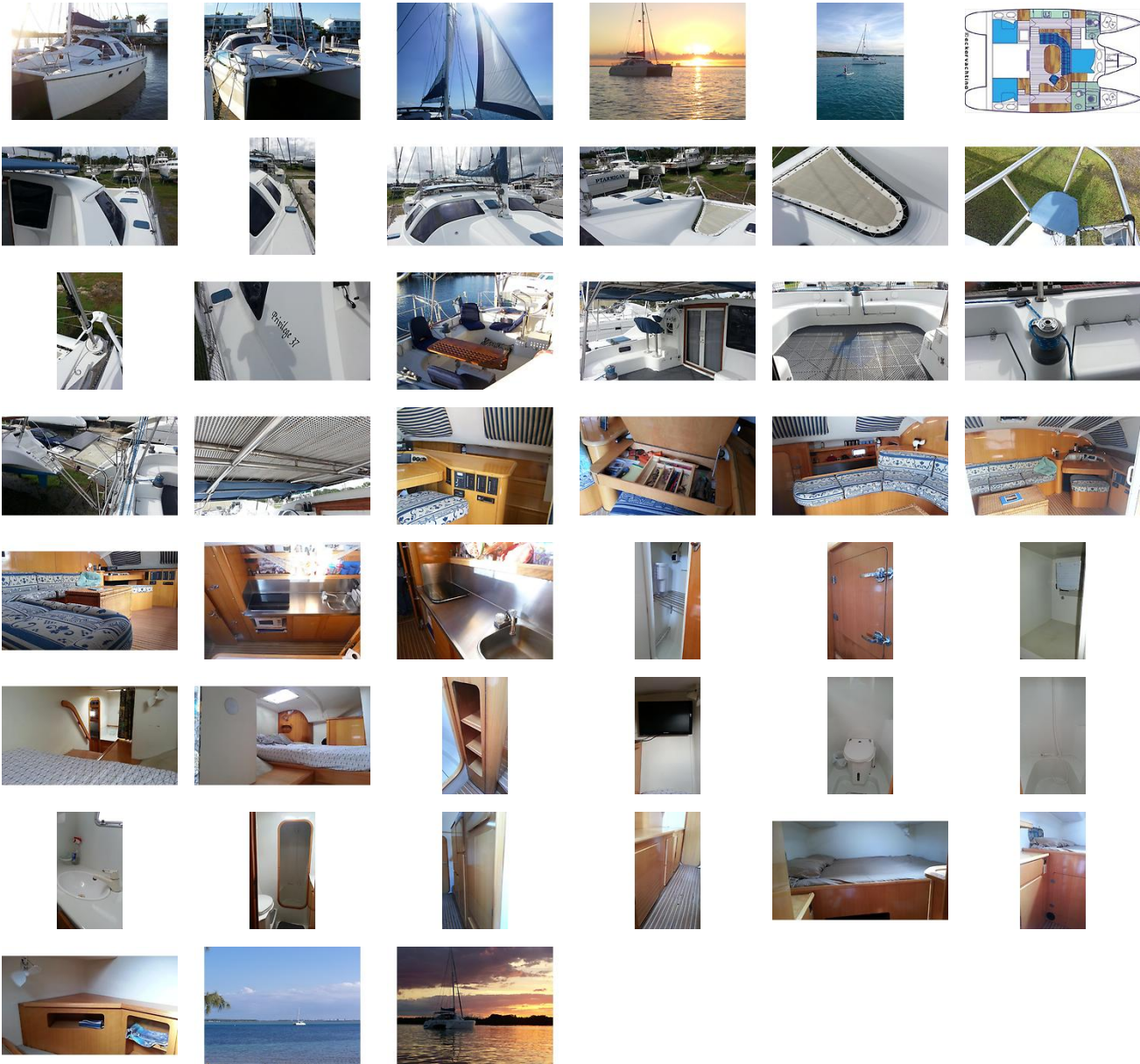
Safety

- 406mhz EPIRB
- 6 Bilge pumps,(4 high output automatic and 2 manual)
- Dyneema Lifelines, (**new 2014**) and SS and stanchions
- Plastimo life sling
- USCG safety equipment
- 4 person Avon liferaft (out of certification)

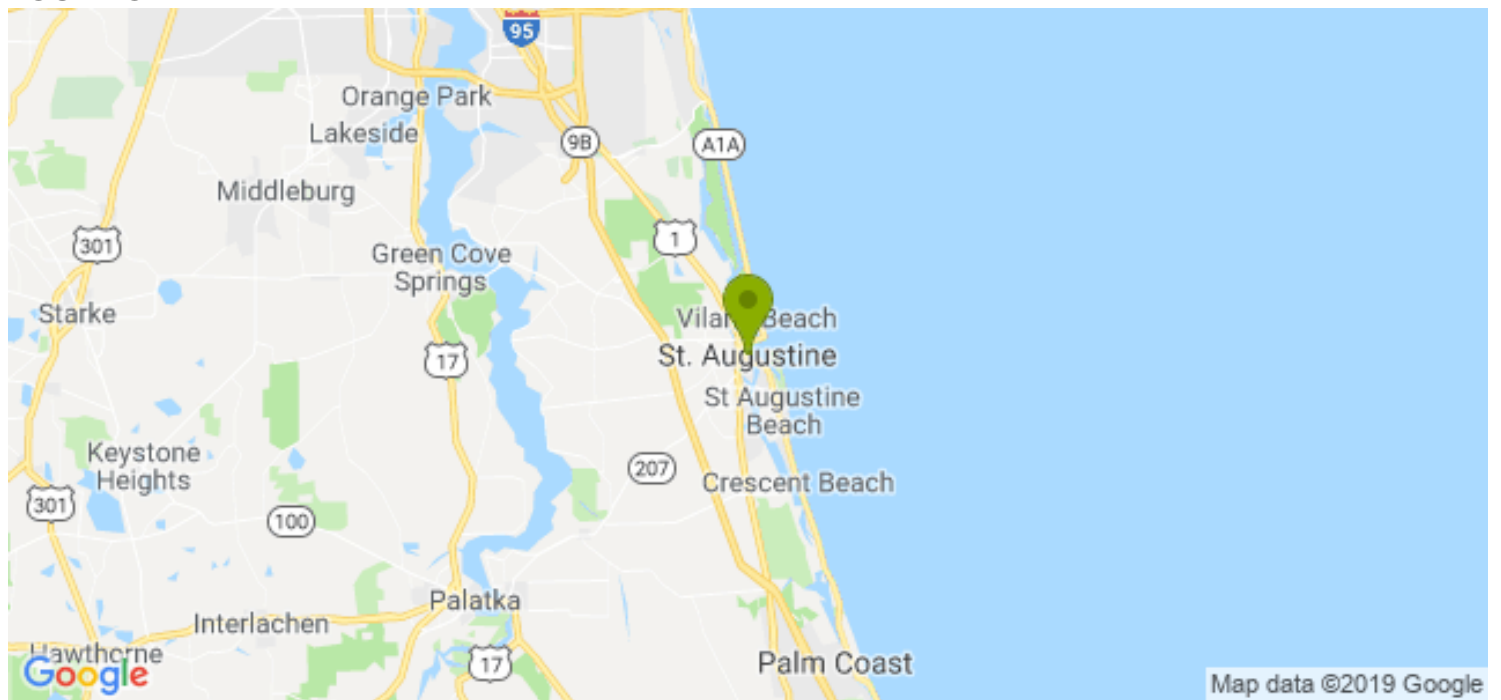
Disclaimer

The Company offers the details of this vessel in good faith but cannot guarantee or warrant the accuracy of this information nor warrant the condition of the vessel. A buyer should instruct his agents, or his surveyors, to investigate such details as the buyer desires validated. This vessel is offered subject to prior sale, price change, or withdrawal without notice.

GALLERY



LOCATION MAP





TOM MORTON
Edwards Yacht Sales
4 Cathedral Place
St. Augustine, FL, US
Office: 727.449.8222
Mobile: 904.377.9446
Tom@EdwardsYachtSales.com

