



LEO THIBAUT
Edwards Yacht Sales
127 E Charlotte Ave
Punta Gorda, FL, US
Office: 727.449.8222
Mobile: 941.504.6754
Leo@EdwardsYachtSales.com



2008 Boston Whaler 305 Conquest Great Shape

Boat Type: Sport Fishing

Address: Placida, FL, US

Price: \$119,900



OVERVIEW

Price Reduction of \$10,000.00 on 11/3/15.. From \$129,900 to \$119,900 Call Today!

Absolutely Loaded W/ Equipment!

Low Hours!

Super Clean! Inside and Out!

Twin 250hp Mercury Verado's w/ 375 Hours

4KW Fischer Panda Generator (Diesel w/ 15 gal Fuel Tank) in a sound Shield

Great Electronics Including Radar, Autopilot, GPS Plotter, and Trac-Vision TV

Roll out Cockpit Bimini

Hard Top W/ Full Helm Enclosure

Out Riggers! and MORE

Boston Whaler's 305 Conquest boasts an impressive 58 square feet of cockpit space - perfect for fish fighting, entertaining or both. The 305's hull design combines quick planing capabilities with a smooth, dry ride.

Its helm deck area is elevated for superior visibility fore and aft, with a portside settee for lounging while leisurely watching the lines. The fully adjustable helm seat features a flip-up seat cushion that converts it to a bolster seat for operation while standing.

The recessed bow walkaround provides more secure-feeling access to the anchor locker and bow area. The cabin interior is warm and inviting, thanks to rich accouterments including woodgrain cabinetry, granite-colored counter tops and decorator fabrics and accents.

Features include cruising package, entertainment package, upgraded electronics with GPS/Plotter, VHF, and Track-vision TV, Out Riggers, roll out Bimini and more!

Call Today! This great Boston Whaler won't last Long!

SPECIFICATIONS

Basic Information

Manufacturer:	Boston Whaler	Vessel Name:	Fin
Model:	305 Conquest Great Shape	Boat Type:	Sport Fishing
Year:	2008	Hull Material:	Fiberglass
Category:	Power	Hull Type:	
Condition:	Used	Hull Color:	
Location:	Placida, FL, US	Designer:	
Available for sale in U.S. waters:	Yes	Flag of Registry:	

Dimensions & Weight

Length:	30 ft - 9.14 meter	Draft - max:	-
LOA:	32 ft 1 in - 9.78 meter	Bridge Clearance:	-
Beam:	10 ft 7 in - 3.22 meter	Dry Weight:	8500 ft - 2590.8 meter

Engine

Make:	Mercury	Engine Type:	Outboard
Model:	Verado 4 Stroke	Drive Type:	
Engine(s):	2	Fuel Type:	Gas/Petrol
Hours:	375	Horsepower:	250 (Individual), 500 (combined)
Cruise Speed:	-	Max Speed:	-
Range:	-	Joystick Control:	No

Tank Capacities

Fuel Tank:	300 gallons - 1 tank(s)	Holding Tank:	10 gallons - 1 tank(s)
Fresh Water Tank:	60 gallons - 1 tank(s)		

Accommodations

Total Cabins:	2	Crew Cabins:	1
Total Berths:	2	Crew Berths:	1
Total Sleeps:	1	Crew Sleeps:	1
Total Heads:	1	Crew Heads:	1
Captains Cabin:	No		

DESCRIPTIONS

Accommodations

Welcome aboard Fin. This great 305 Conquest has seen nothing but the finest of care! Wonderful layout, Great Electronics, Extra Clean inside and out, and ready to GO!! Fin Has a wonderful cockpit perfect for fishing and entertaining. An elevated helm makes handling easy. Great visibility both fore and aft. The spotless galley is down to port and the extra clean head is to starboard. The cabin is climate controlled with reverse cycle A/C and heat operated on both shore power and diesel generator. This boat is the complete package of functionality, comfort, speed and strength. Take one look at Fin and you will agree. Call today! Fin will make your dreams come true!

Galley

The spotless Galley is aft to port and features everything needed to make the chef happy.

Plenty of storage, Ample Counter top space, and great layout!

- Galley TV With Trac-Vision Satellite
- Electric stove
- Microwave
- Refrigerator 12V/120V
- Large sink with cover and hot and cold faucets
- Beautiful wood grain finish cabinets

Head

- The SUPER CLEAN Head is to Starboard and has plenty of room even for your larger guests.
- 800 GPH shower sump pump with cover
- Lighting
- Mirror
- Opening port hole with screen
- Sink with hot and cold faucet with pullout shower head
- Storage area
- Vacu-Flush® toilet, holding tank, dockside pump-out and overboard discharge

Electronics and Navigation

Ready to push off today with Confidence! Fishing, Island Hopping, Bahamas, This Great Boat is Ready to GO!!

COMPASS: RITCHIE POWERDAMP

VHF: RAYMARINE

DEPTH/PLOTTER: RAYMARINE E 120

AUTOPILOT: GARMIN

RADAR: RAYMARINE E 120

G.P.S: RAYMARINE E 120

Trac-Vision Satellite TV

Cockpit and Deck

- 10" stainless steel cleats; bow (2) stern (2), bow pulpit (1)
- Electric Windless
- 28" interior freeboard
- 8" Cleats; spring line (2)
- Acrylic transom door
- Aluminum framed tempered glass windshield with electric vent
- Bow and stern lifting eyes
- Cockpit coaming bolsters
- Cockpit courtesy lighting
- Cockpit shower
- Covered telescoping swim ladder with stainless steel grab rail
- Drink holders (6)
- Gunned stainless steel rod holders (4)
- Hardtop with cockpit flood lights, dome light, and 5 rod holders
- Heavy duty rub rail
- Integral bow pulpit with stainless steel roller assembly
- Motorwell drains
- Self bailing cockpit
- Stainless steel cockpit toe rails with downrigger weight holders (2 per side)
- Stainless steel grab rails (2)
- Stern stainless steel hawse pipes with drink holders
- Transom mounted stainless steel rod holders (3)
- Welded stainless steel bow rail

Electrical Systems

4 KW Fischer Panda Generator (Diesel) in a Sound Shield with 15 gal Tank

Reverse Cycle Air Conditioning

(4) SERIES 31 AGM -ENGINE & HOUSE - 2014

Shore Power

Battery Charger

Shore power Cord

GFCI Outlets

Mechanical

- Automatic bilge pumps (1100 GPH fwd, 2000 GPH aft)
- Battery trays with switches (3)
- Cockpit bait prep center
- Cockpit lighting
- Dockside hook up for water system

- Electric horn
- Electric trim tabs with indicator
- Fuel tanks (3), 300-gallons total
- High water bilge pump with alarm
- Livewell (24-gallon) with raw-water fill, light, cutting board and blue interior
- Navigation lights with rope guide
- Raw-water washdown
- Shore power with battery charger, isolation transformer, and shore power cord
- Stainless steel propellers
- Tilt steering
- Transducer mount area
- Windlass with rode and anchor
- Windshield wipers port and starboard

Brokers Comments

Absolutely Loaded with Equipment!

Low Hours!

Super Clean! Inside and Out!

Twin 250hp Mercury Verado's w/ 375 Hours

4KW Fischer Panda Generator (Diesel w/ 15 gal Fuel Tank) in a sound Shield

Great Electronics Including Radar, Autopilot, GPS Plotter, and Trac-Vision TV

Roll out Cockpit Bimini

Hard Top W/ Full Helm Enclosure

Out Riggers! and MORE

Boston Whaler's 305 Conquest boasts an impressive 58 square feet of cockpit space - perfect for fish fighting, entertaining or both. The 305's hull design combines quick planing capabilities with a smooth, dry ride.

Its helm deck area is elevated for superior visibility fore and aft, with a portside settee for lounging while leisurely watching the lines. The fully adjustable helm seat features a flip-up seat cushion that converts it to a bolster seat for operation while standing.

The recessed bow walkaround provides more secure-feeling access to the anchor locker and bow area. The cabin interior is warm and inviting, thanks to rich accouterments including woodgrain cabinetry, granite-colored counter tops and decorator fabrics and accents.

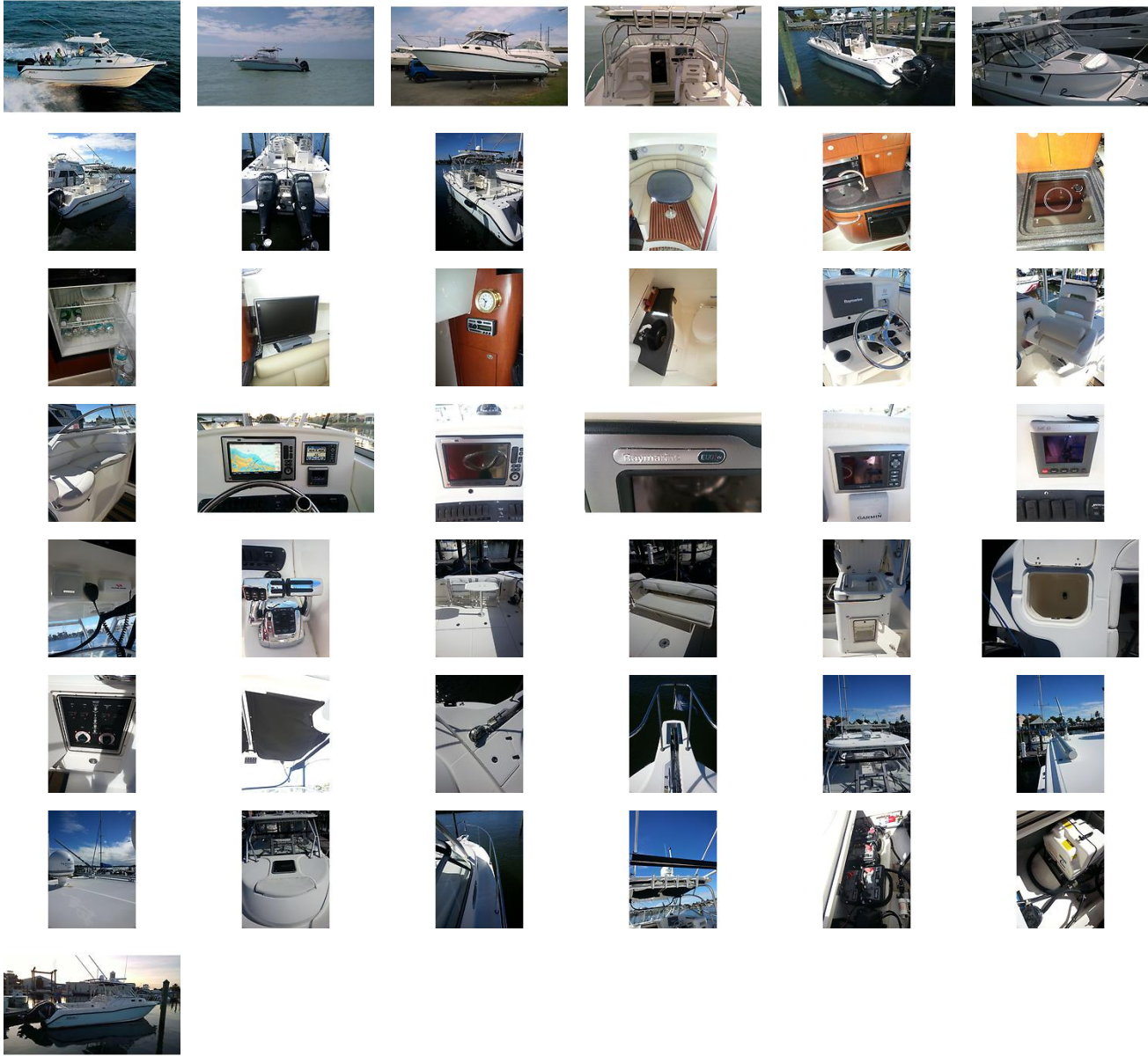
Features include cruising package, entertainment package, upgraded electronics with GPS/Plotter, VHF, and Track-vision TV, Out Riggers, roll out Bimini and more!

Call Today! This great Boston Whaler won't last Long!

Disclaimer

The Company offers the details of this vessel in good faith but cannot guarantee or warrant the accuracy of this information nor warrant the condition of the vessel. A buyer should instruct his agents, or his surveyors, to investigate such details as the buyer desires validated. This vessel is offered subject to prior sale, price change, or withdrawal without notice.

GALLERY



LOCATION MAP





LEO THIBAUT
Edwards Yacht Sales
127 E Charlotte Ave
Punta Gorda, FL, US
Office: 727.449.8222
Mobile: 941.504.6754
Leo@EdwardsYachtSales.com

